



WACHUSETT REGIONAL SCHOOL DISTRICT

Holden - Paxton - Princeton - Rutland - Sterling



Massachusetts School Building Authority

Funding Affordable, Sustainable and Efficient Schools for Local Communities

Mountview Middle School



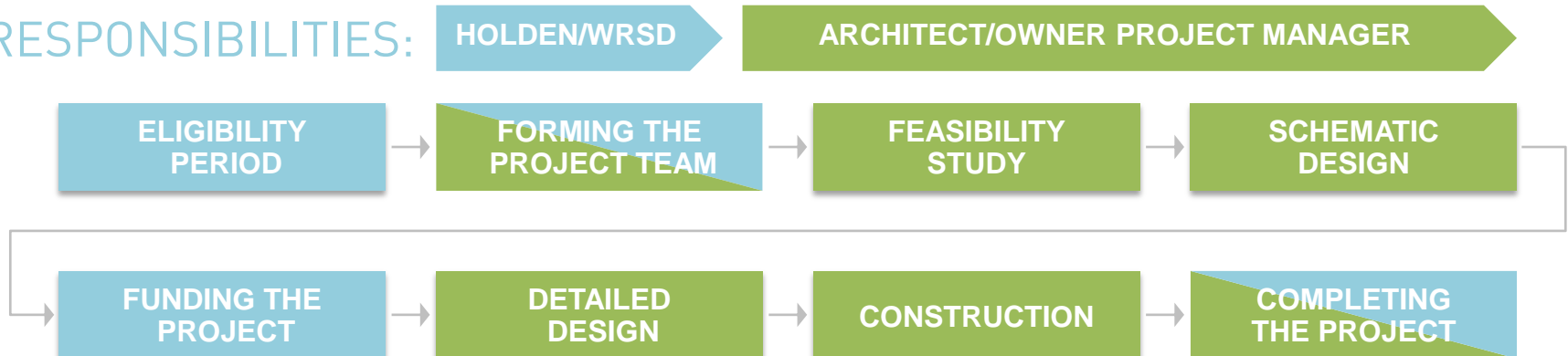
MSBA BUILDING PROCESS



Massachusetts School Building Authority
Funding Affordable, Sustainable and Efficient Schools for Local Communities

- Module-I: Eligibility Period
- Module-II: Forming the Project Team
- Module-III: Feasibility Study
- Module-IV: Schematic Design
- Module-V: Funding the Project
- Module-VI: Detailed Design
- Module-VII: Construction
- Module-VIII: Completing the Project

RESPONSIBILITIES:



Statement of Interest

Approved by the Massachusetts School Building Authority in November of 2008 for Mountview Middle School.

Massachusetts School Building Authority

School District: Waltham
 District Contact: Thomas G. Paulsen, VII, (978) 529-1679
 Name of School: Mountview Middle
 Submission Date: 11/13/2008

Note

The following Priorities have been included in the Statement of Interest:

1. ☐ Replacement or renovation of a building which is structurally unsound or otherwise in a condition seriously jeopardizing the health and safety of school children, where no alternative exists.
2. ☐ Elimination of existing severe overcrowding.
3. ☐ Prevention of the loss of accreditation.
4. ☐ Prevention of severe overcrowding expected to result from increased enrollments.
5. ☐ Replacement, renovation or modernization of the heating system in a schoolhouse to increase energy conservation and decrease energy related costs in the schoolhouse.
6. ☐ Short term enrollment growth.
7. ☐ Replacement of or addition to obsolete buildings in order to provide for a full range of programs consistent with state and approved local requirements.
8. ☐ Transition from court-ordered and approved racial balance school districts to walk-to, no-called, or other school districts.

Potential Project Scope: Major Project

Is this SOI the District Priority SOI? YES

The MSBA ID for the District Priority SOI: 2009 Mountview Middle

District Goal for School: Please explain the educational goals of any potential project at this school.
 Mountview Middle School has the largest middle school enrollment in the regional school district. In FY2007 the regional school district undertook a Literacy Initiative for elementary grades. A renovated Mountview Middle School will better enable the Literacy Initiative to be successful in middle grades.

Is this part of a larger facilities plan? NO

If "YES", please provide the following:
 Facilities Plan Date:
 Planning Phase:
 Please provide an overview of the plan including as much detail as necessary to describe the plan, its goals and how the school facility that is the subject of this SOI fits into that plan.

Please provide the current student to teacher ratios at the school facility that is the subject of this SOI: 21 students per teacher.

Please provide the originally planned student to teacher ratios at the school facility that is the subject of this SOI: 20

RESPONSIBILITIES:

HOLDEN/WRSD

ARCHITECT/OWNER PROJECT MANAGER

ELIGIBILITY
PERIOD

FORMING THE
PROJECT TEAM

FEASIBILITY
STUDY

SCHEMATIC
DESIGN

FUNDING THE
PROJECT

DETAILED
DESIGN

CONSTRUCTION

COMPLETING
THE PROJECT

School Building Committee

Was formed in November of 2010 following the town's approval of funding for the Feasibility Study

Owner's Project Manager (OPM)

Gary Kaczmarek was hired in December of 2011

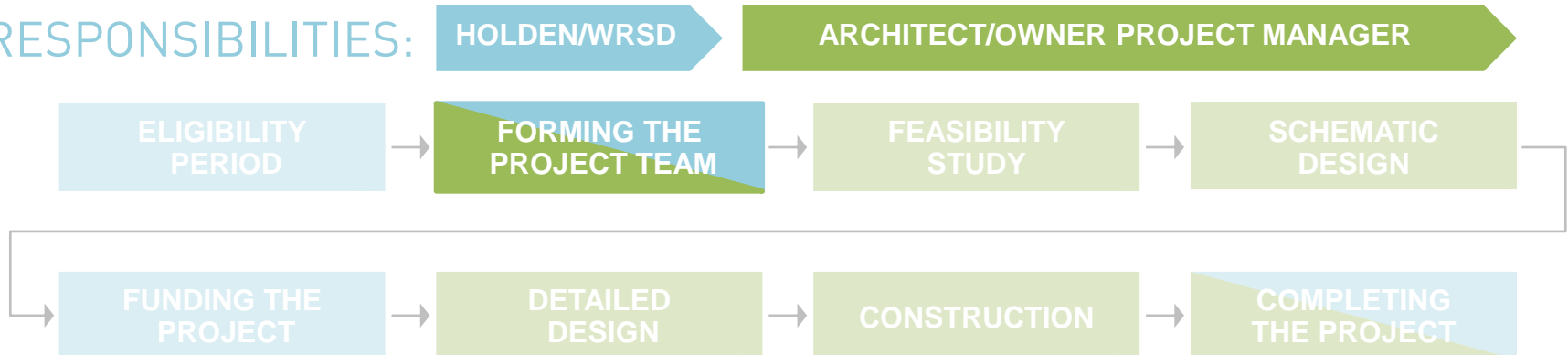
Designer

Lamoureux Pagano Associates Architects was hired in April of 2012

School Building Committee

Paul Challenger,	Chairman
David White, Sr.,	Vice Chairman
Peter Brennan,	Clerk
Jacquelyn Kelly	
Nancy Galkowski	
Margaret Watson	
Thomas Pandiscio	
Eric Githmark	
Michael Sherman	
Christopher Lucchesi	

RESPONSIBILITIES:

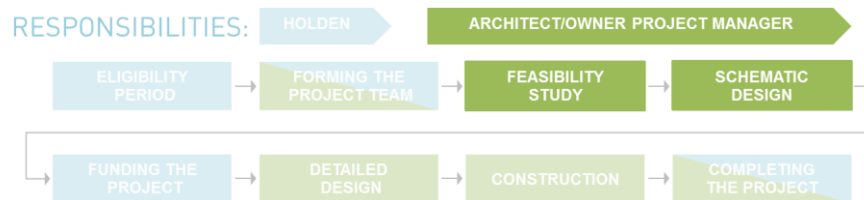


Feasibility Study

- Preliminary Design Program (PDP)
- Local Approval of PDP
- MSBA Review of PDP
- Preferred Schematic Report (PSR)
- Local Approval of PSR
- MSBA Staff Review
- Facilities Assessment Subcommittee Review
- Approval by MSBA Board of Directors to Proceed into Schematic Design

Schematic Design

- Schematic Design Submittal
- Department of Elementary & Secondary Education Submittal
- Schematic Design Binder
- Schematic Design Project Manual
- Schematic Design Drawings
- Local Actions and Approval
- Review and Approval of Schematic Design Submittal
- MSBA Staff Review
- Facilities Assessment Subcommittee review
- Project Scope and Budget
- MSBA Board approval



Task Name	Duration	Start	Finish
1. PROJECT KICK-OFF MEETING	1 day	Mon 5/14/12	Mon 5/14/12
2. LPA AND CONSULTANT WALK THROUGH	1 day	Thu 5/24/12	Thu 5/24/12
3. INITIAL SPACE SUMMARY	7 days	Thu 5/24/12	Fri 6/1/12
4. EVALUATION OF EXISTING CONDITIONS	7 days	Thu 5/24/12	Fri 6/1/12
5. SITE DEVELOPMENT REQUIREMENTS	15 days	Thu 5/24/12	Wed 6/13/12
6. EVALUATION OF ALTERNATIVES	25 days	Wed 5/30/12	Tue 7/3/12
7. GEOTECHNICAL BORINGS	1 day	Wed 5/30/12	Wed 5/30/12
8. LPA TEACHER INPUT MEETING	1 day	Tue 6/5/12	Tue 6/5/12
9. TRAFFIC STUDY	1 day	Thu 6/7/12	Thu 6/7/12
10. ALTERNATIVE SITES MEETING WITH TOWN OFFICIALS	1 day	Wed 6/13/12	Wed 6/13/12
11. GREEN CHARRETTE MEETING	1 day	Thu 6/21/12	Thu 6/21/12
12. PROPOSED SPACE SUMMARY BY WRSD	8 days	Thu 6/21/12	Mon 7/2/12
13. LPA PRESENT PDP PROGRESS TO SCHOOL BUILDING COMMITTEE	26 days	Tue 6/26/12	Tue 7/31/12
14. OPM REVIEW PDP PROGRESS SUBMITTALS	31 days	Tue 7/3/12	Tue 8/14/12
15. LPA PRESENTATION TO PUBLIC, BOARD OF SELECTMAN, FINANCE COMMITTEE, & TOUR BUILDING	1 day	Tue 7/17/12	Tue 7/17/12
16. LPA DELIVER PDP TO SBC FOR REVIEW	11 days	Tue 7/24/12	Tue 8/7/12
17. SCHOOL BUILDING COMMITTEE VOTE ON PDP	1 day	Tue 8/7/12	Tue 8/7/12
18. SIGNED LOCAL ACTIONS APPROVAL CERTIFICATE	1 day	Tue 8/7/12	Tue 8/7/12
19. PDP TO MSBA	0 days	Wed 8/15/12	Wed 8/15/12
20. MSBA REVIEW PDP	32 days	Wed 8/15/12	Thu 9/27/12
21. LPA CREATE PSR	19 days	Thu 8/16/12	Tue 9/11/12
22. OPM REVIEW PSR SUBMITTALS	13 days	Thu 8/30/12	Mon 9/17/12
23. SBC VOTE ON PSR	1 day	Tue 9/18/12	Tue 9/18/12
24. SIGNED LOCAL ACTIONS APPROVAL CERTIFICATE	1 day	Tue 9/18/12	Tue 9/18/12
25. LPA PRESENT PSR TO SCHOOL BUILDING COMMITTEE	1 day	Thu 9/20/12	Thu 9/20/12
26. PSR TO MSBA	0 days	Thu 9/27/12	Thu 9/27/12
27. MSBA REVIEW PSR	34 days	Fri 9/28/12	Wed 11/14/12
28. FACILITIES ASSESSMENT SUBCOMMITTEE MEETING	1 day	Wed 10/17/12	Wed 10/17/12
29. MSBA BRD VOTE ON PSR	0 days	Wed 11/14/12	Wed 11/14/12
30. DEVELOP SCHEMATIC DESIGN PACKAGE AND BUDGET	33 days	Thu 11/15/12	Mon 12/31/12
31. SD SUBMITTALS DUE TO MSBA	0 days	Wed 1/2/13	Wed 1/2/13
32. MSBA BOARD VOTE ON SCHEMATIC DESIGN	0 days	Tue 3/5/13	Tue 3/5/13

Preliminary Design Program (PDP)

- Introduction
- Educational Program
- Initial Space Summary
- Evaluation of Existing Conditions
- Site Development Requirements
- Preliminary Evaluation of Alternatives
- Recommendation of Distinct Alternates
- Local Actions and Approvals

Will be submitted to MSBA on August 15th, 2012

Alternatives to be Evaluated:

- No Build
- Tuition Agreements with Other Districts
- Existing Building Acquisition
- Base Repair
- Renovation/ Addition
- New Construction on Existing Site
- New Construction on Alternate Site

RESPONSIBILITIES:

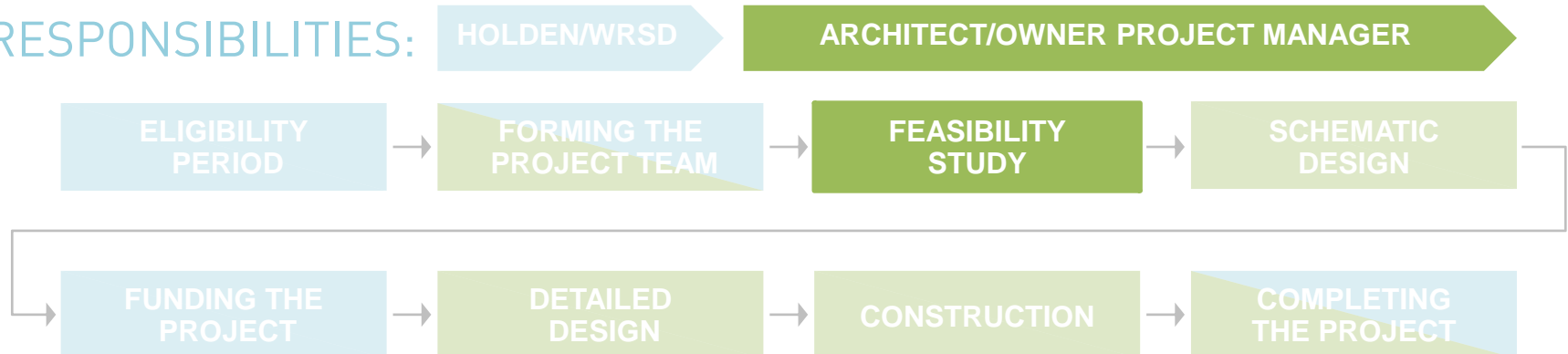


TABLE OF CONTENTS

3.1.1 INTRODUCTION

- A. Narrative Summary
- B. Project Directory
- C. Updated Project Schedule

3.1.2 EDUCATIONAL PROGRAM

- A. Narrative
- B. Teaching Philosophy Statement
- C. Supporting Documents

3.1.3 INITIAL SPACE SUMMARY

- A. Floor Plans of Existing Facility
- B. MSBA Space Summary Template
- C. Narrative for Variances

3.1.4 EVALUATION OF EXISTING CONDITIONS

- A. Legal Title to the Property
- B. Determination of Historical Registrations
- C. Determination of Development Restrictions
- D. Evaluation of Building Code Compliance
- E. Evaluation of Architectural Access Board (AAB) Rules & Regulations
- F. Evaluation of Significant Structural, Environmental, Geotechnical or other Physical Conditions
- G. Determination for Need and Schedule for Soils Exploration & Geotechnical Evaluation
- H. Environmental Site Assessments
- I. Assessment of the Facility for the Presence of Hazardous Materials

3.1.5 SITE DEVELOPMENT REQUIREMENTS

- A. Narrative
- B. Existing Site Plan
- C. Existing/Proposed Site Program Template

3.1.6 PRELIMINARY EVALUATION OF ALTERNATIVES

- A. Narrative
- B. Base Repair Option
- C. Renovation – Additions Option
- D. New Construction on Existing Site Option
- E. New Construction on Alternate Site Option
- F. Recommended Alternatives for Further Development and Evaluation
- G. Supporting Documents

3.1.7 LOCAL ACTIONS AND APPROVAL

- A. Narrative
- B. Local Actions and Approvals Certification

PDP APPENDICES

- A. Current Statement of Interest (SOI)
- B. MSBA Board Action Letter
- C. Executed Design Enrollment Certification

MOUNTVIEW MIDDLE SCHOOL
Holden, MA 01529

PROGRAM
DRAFT FACULTY QUESTIONNAIRE
May 21, 2012

INTRODUCTION: The purpose of this questionnaire is to gather your input as we develop the Building Program. Please feel free to attach additional pages as necessary to address additional issues.

IDENTIFICATION

Name Alexis McConnell
Subject/Classes Taught 6th grade art

GENERAL

Number of Students in Classes 18-24
Brief Description of Curriculum All around art curriculum, multiple mediums, paint, paper mache, drawing, metal tooling, sculpture etc.

Are there special requirements (i.e. limited access, off hours, etc.) for accessing this space?

STORAGE Describe any special storage needs or desires. I would need a lot of storage for supplies, myself and the other art teacher could share an adjoining storage space between classrooms. Students need to be able to store their work within the classroom so they do not take anything home or lose it. Drawers, shelves and cabinets are a must. Counter space and at least two sinks would be great too.

FINISHES Describe any particular floor, wall, and ceiling finish material requirements.
Easily washable floor. Wall that can have things hung without falling off or taking off paint.

SPECIALTIES Describe any marker board, tack board or display requirements or suggestions.
White board, bulletin boards. Large areas to hang/display student work both in classroom nad in the hallway outside the room.

MOUNTVIEW MIDDLE SCHOOL
Holden, MA 01529

PROGRAM
DRAFT FACULTY QUESTIONNAIRE
May 21, 2012

EQUIPMENT Describe any special requirements for television/monitor, projector, interactive white boards, projection screens or other equipment.

smartboard

FURNISHINGS Check all applicable

Workstations – Check all applicable and indicate desired type and quantity.

X Desks teachers desk 1
X Tables depending on size 6
X Computers 2- 1 student 1- teacher
X Tablet Chairs 26
☐ Stools
☐ Other (Describe special requirements)

MECHANICAL

PLUMBING – Describe any special requirements for plumbing fixtures or systems (i.e. sinks, showers, washing machine hook-ups, drinking fountains, gas fittings, chemical waste, etc.).
2 sinks would be great

HVAC – Describe any special requirements for heating, ventilation and air conditioning (i.e. equipment exhaust, special air change requirements, etc.).
Yes I would like heat, ventilation and AC

ELECTRICAL

Power – Describe any special power requirements (i.e. dryers, kilns, and other special equipment, floor outlets, etc.)
Kiln and necessary ventilation

Data Communications – Describe the use of computers and television in your space including ideal locations and quantities.
One computer for students to use- I don't care where that goes. One computer that would go on my desk. Smart board on the wall

MOUNTVIEW MIDDLE SCHOOL
Holden, MA 01529

PROGRAM
DRAFT FACULTY QUESTIONNAIRE
May 21, 2012

EXISTING CONDITIONS

What teaching/learning strategies do you use, or would like to use, that are not supported by your existing conditions?
No kiln to do clay, not enough space to do larger sculpture projects. Not enough space/storage to do larger painting/art projects.

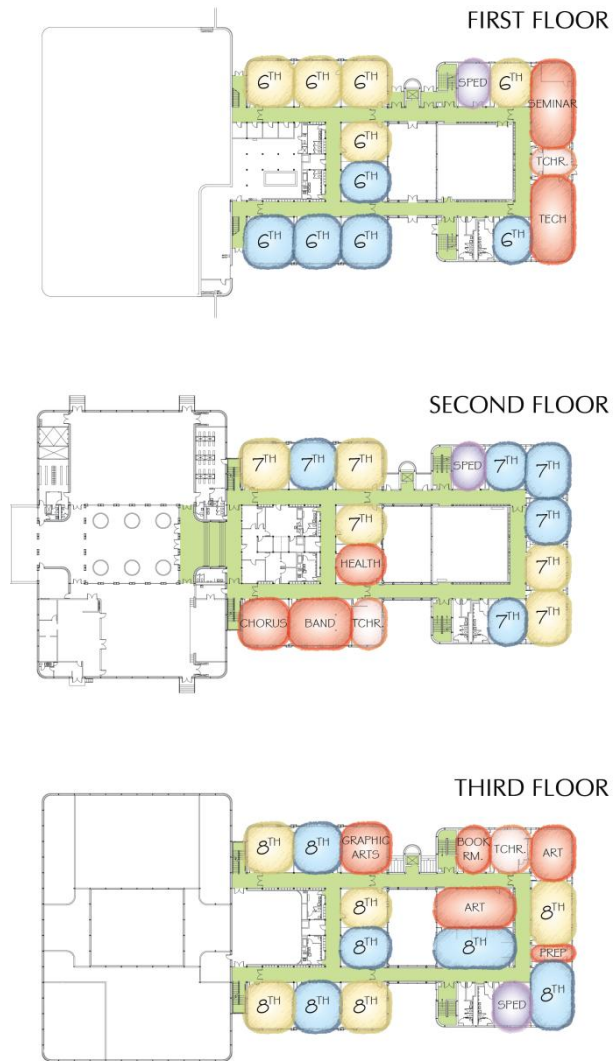
FUTURE CONSIDERATIONS

Describe any future trends you anticipate that might affect the design of your space.
I think it would be great to put the art rooms with the music rooms. No one wants to be near music except us because then we can be a little louder and not bother other classes. Maybe an Arts section of the building so no one else has to deal with our noise and mess. A lot of natural light would be good and maybe even an outside door close to the classroom so we can take kids outside to do lessons.

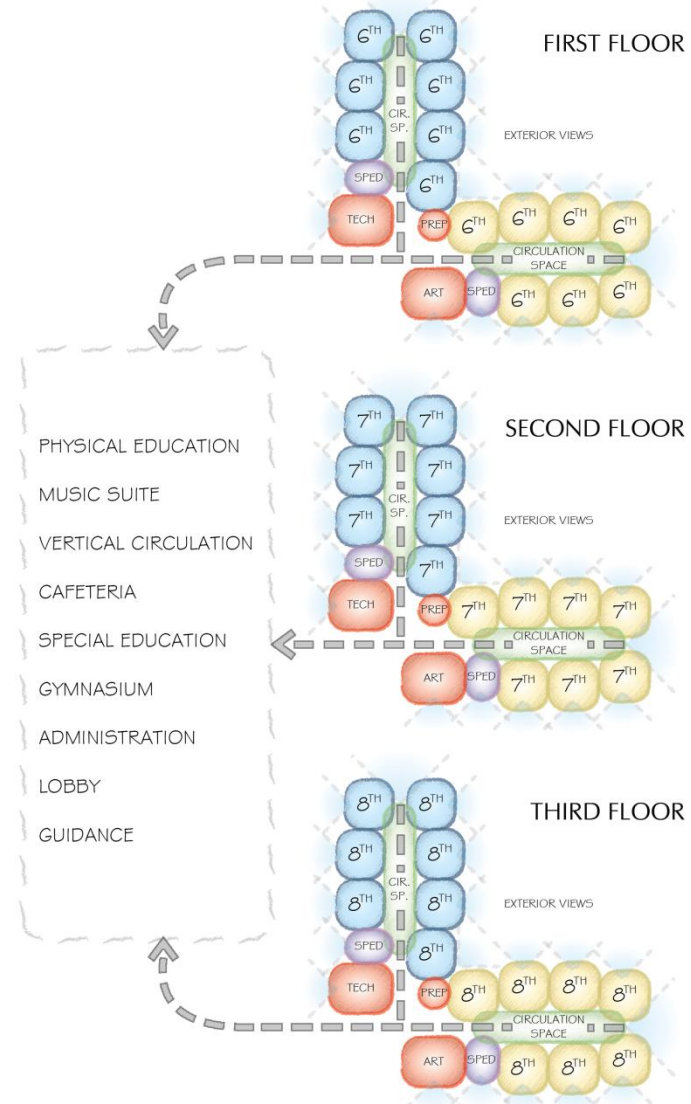
Thank you for your input.



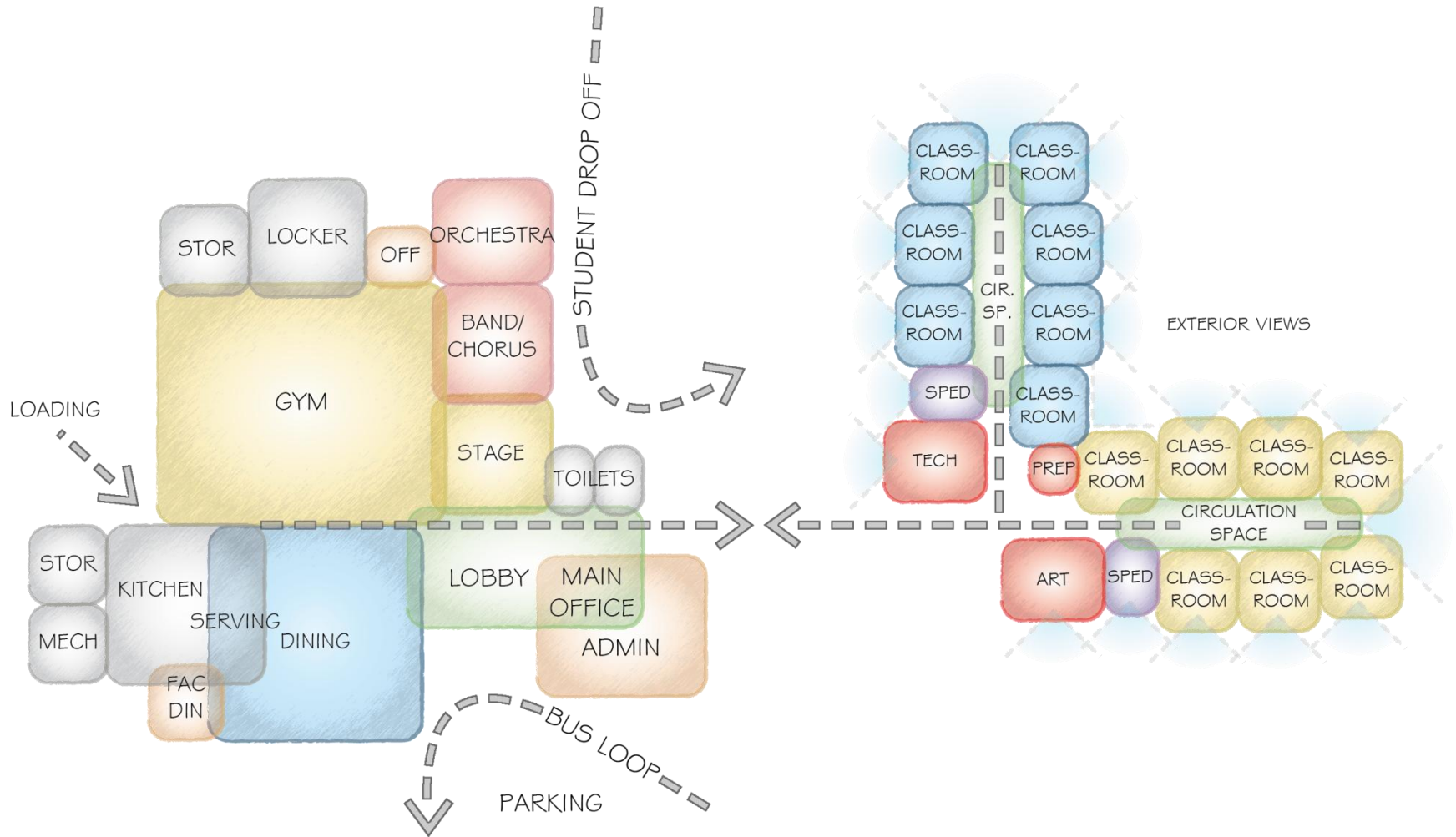
Existing Academic Wing Diagram

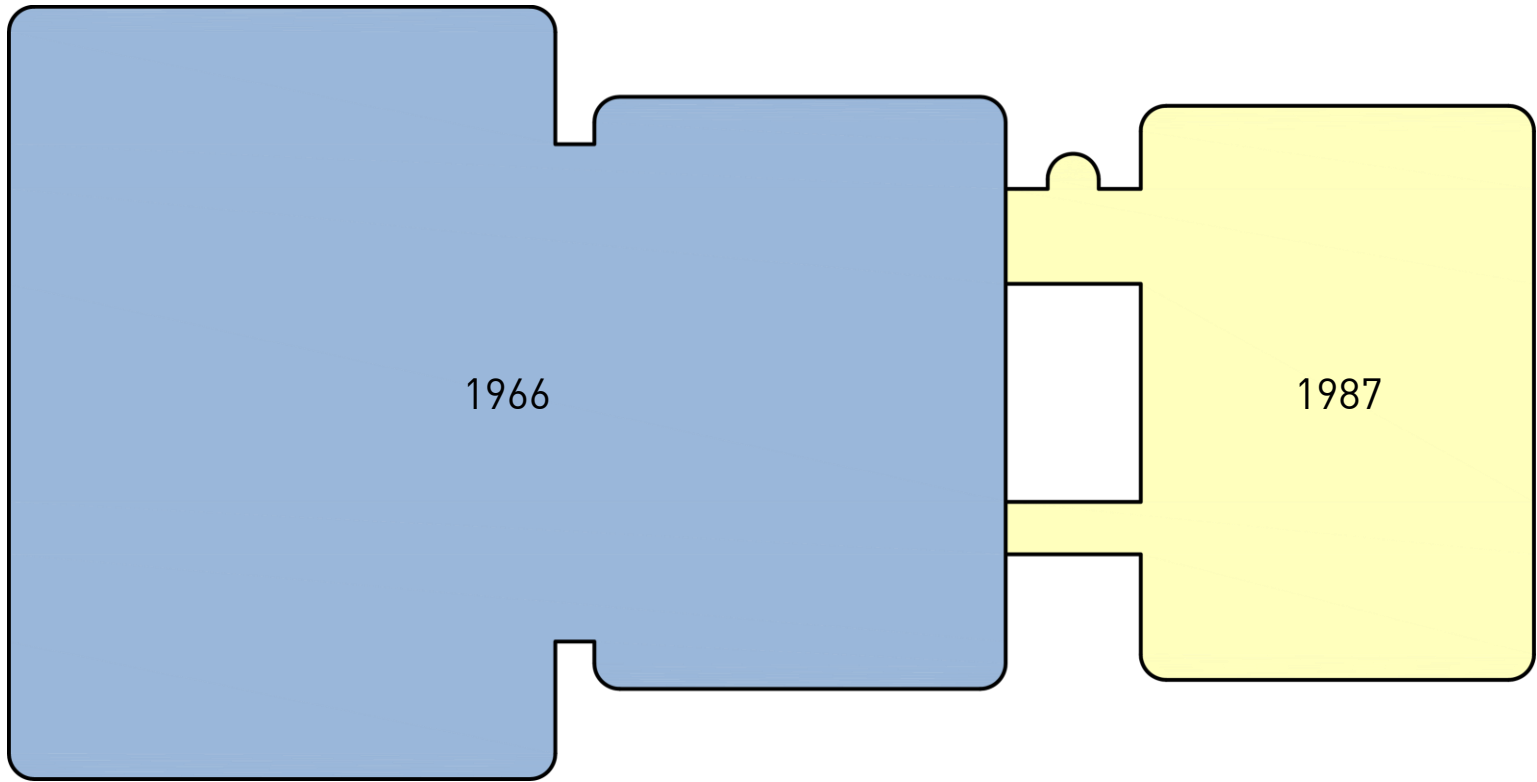


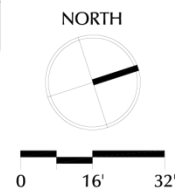
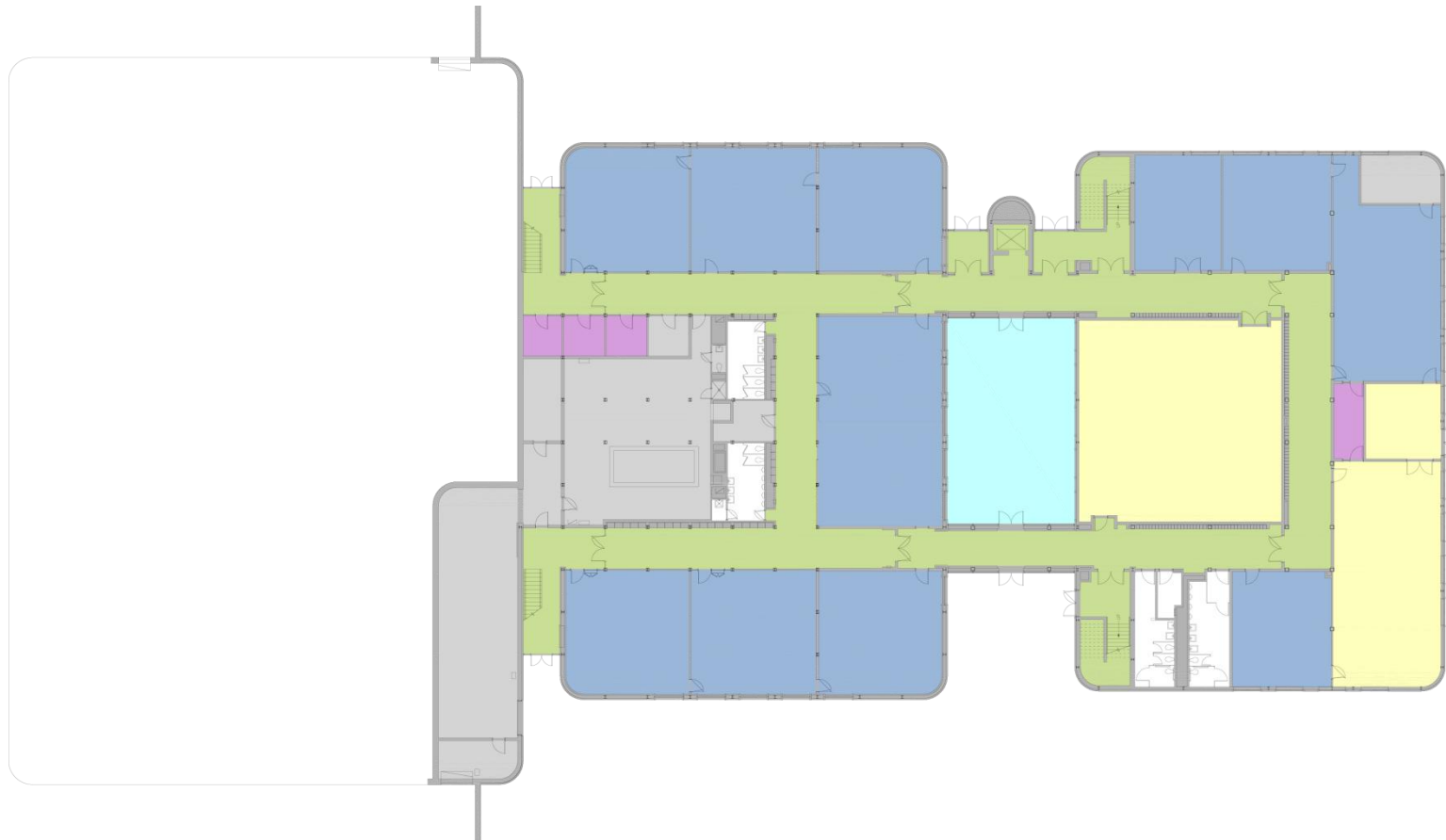
Proposed Academic Wing Diagram

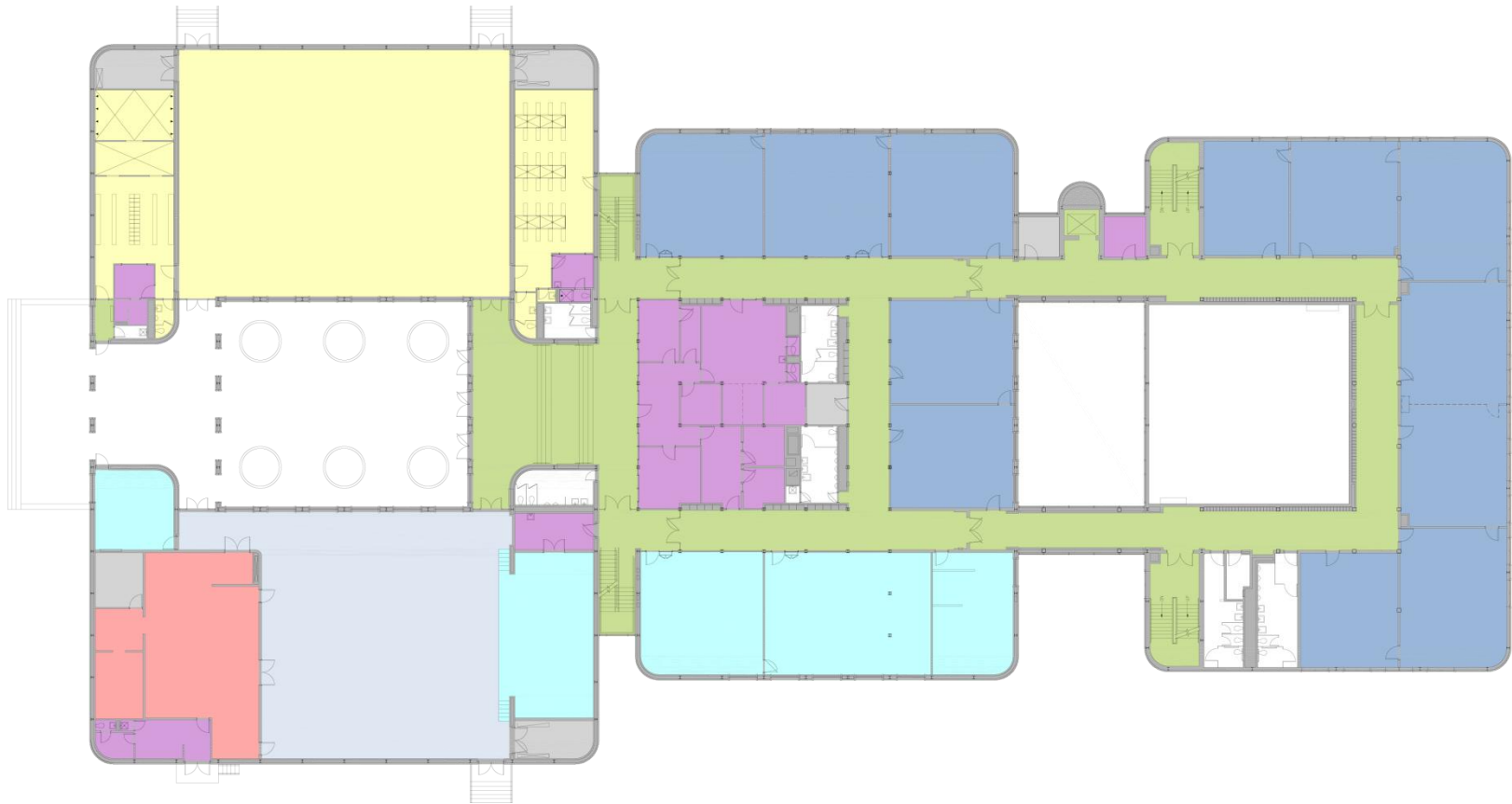


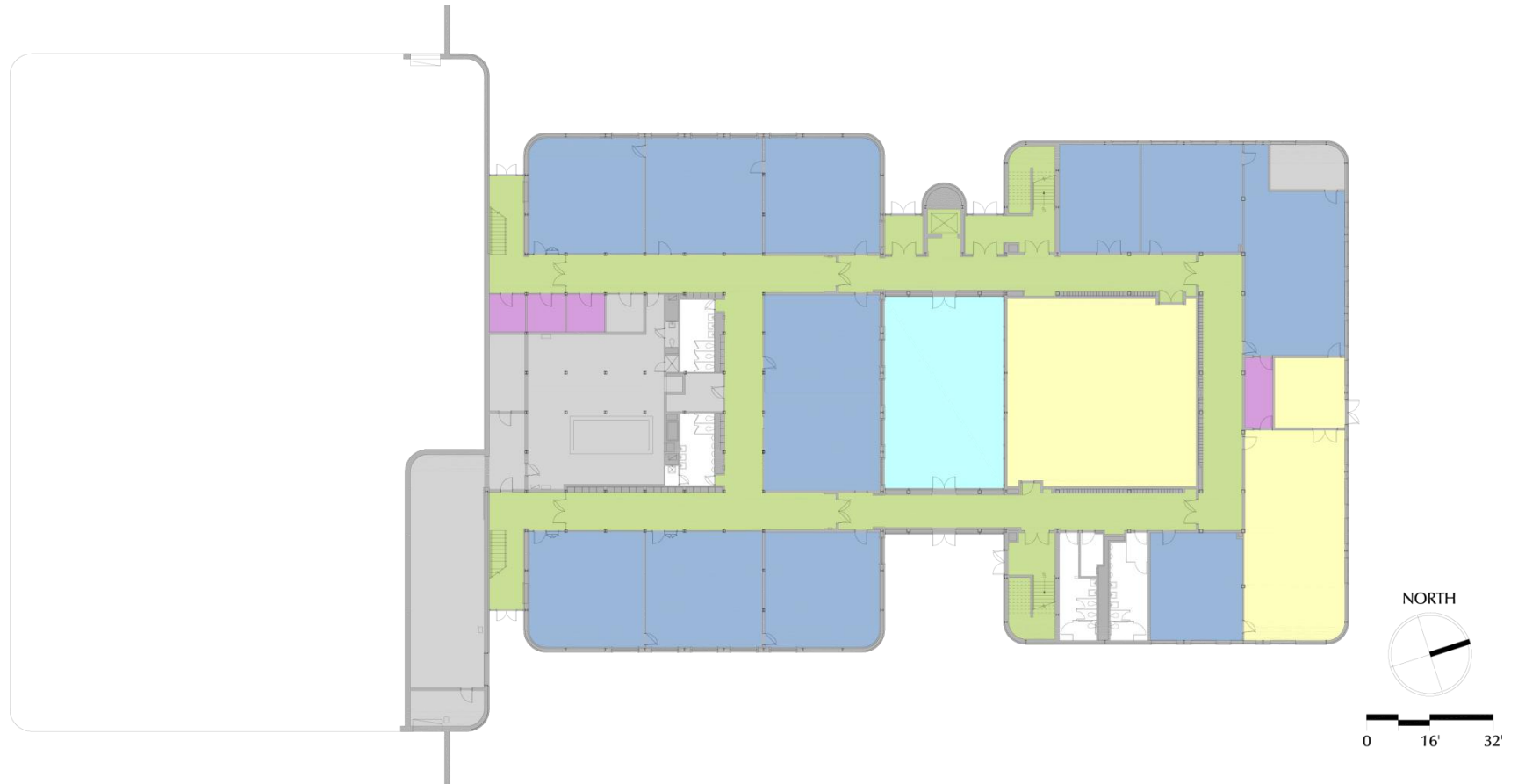
Proposed Educational Program Diagram

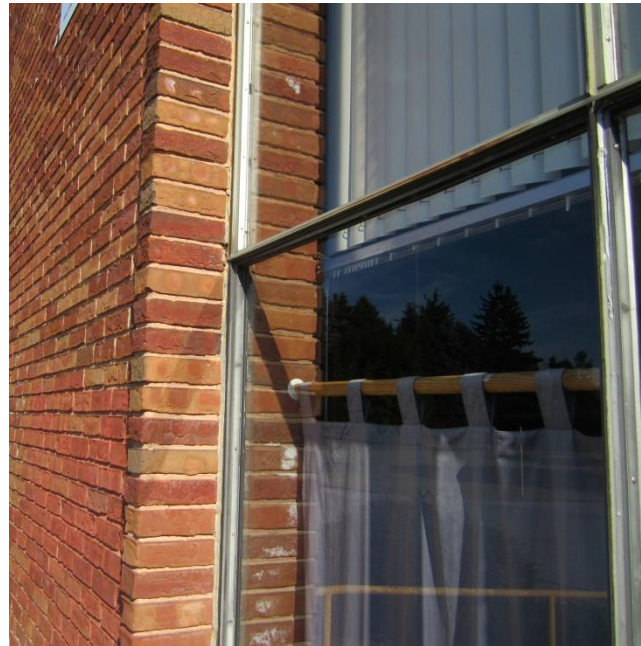












PRELIMINARY DESIGN PROGRAM Existing Conditions: *Corridors*

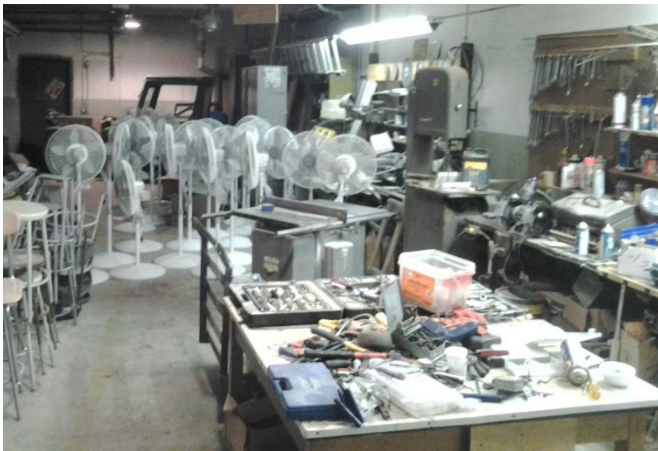












Proposed Space Summary - Middle Schools

Mountview Middle School	Existing Conditions		
ROOM TYPE	ROOM NFA ¹	# OF RMS	area totals
CORE ACADEMIC SPACES			25,145
<i>(List classrooms of different sizes separately)</i>			
Classroom - General			
Classroom - General 100,112, 200, 300, 315	846	5	4,230
Classroom - General 101	860	1	860
Classroom - General 111,201,301,314	861	4	3,444
Classroom - General 103,109,303,313	719	4	2,876
Classroom - General 102,110,202,312	838	4	3,352
Classroom - General 203	714	1	714
Classroom - General 207,208	725	2	1,450
Classroom - General 311	1,148	1	1,148
Classroom - General 210	635	1	635
Small Group Seminar (20-30 seats) / Resource 106	1,120	1	1,120
Science Classroom / Lab			0
Science Classroom / Lab 105	695	1	695
Science Classroom / Lab 108	632	1	632
Science Classroom / Lab 206	842	1	842
Science Classroom / Lab 209	844	1	844
Science Classroom / Lab 308	1,033	1	1,033
Science Classroom / Lab 309	1,032	1	1,032
Prep Room/Storage 213	161	1	161
Storage 212	77	1	77
SPECIAL EDUCATION			2,671
<i>(List classrooms of different sizes separately)</i>			
Self-Contained SPED			
SPED 104	635	1	635
SPED 204	553	1	553
SPED 310	551	1	551
Resource Rooms	90	3	270
Resource Rooms	56	1	56
Psychologist 306	606	1	606
Self-Contained SPED Toilet			
Resource Room			
Small Group Room / Reading			
ART & MUSIC			4,423
Art Classroom 307	856	1	856
Art Workroom 305	1,165	1	1,165
Chorus 213	1,143	1	1,143
Orchestra	351	1	351
Band			
Instrument Storage	62	1	62
Music Practice / Ensemble 212	846	1	846
Music (behind caf)	351	1	351
VOCATIONS & TECHNOLOGY			1,655
Tech Cirm. - (E.G. Drafting, Business)			
Tech 107	1,342	1	1,342
Tech Shop - (E.G. Consumer, Wood)	313	1	313
HEALTH & PHYSICAL EDUCATION			10,653
Gymnasium			
Mini Gymnasium	2,244	1	2,244
Gymnasium	4,619	1	4,619
Gym Storeroom	167	2	334
Health Instructor's Office w/ Shower & Toilet	122	1	122
Health Instructor's Office-Boys			
Health Instructor's Office-Girls			
Health 211	102	1	102
Health Instructor's Office 007	714	1	714
	553	1	553
Locker Rooms - Girls w/ Toilets	883	1	883

11.24.2010

PROPOSED								
Existing to Remain/Renovated			New			Total		
ROOM NFA ¹	# OF RMS	area totals	ROOM NFA ¹	# OF RMS	area totals	ROOM NFA ¹	# OF RMS	area totals
		0			35,310			35,310
0	0	0	910	30	27,300		30	27,300
0	0	0	0	0	0		0	0
0	0	0	0	0	0		0	0
0	0	0	0	0	0		0	0
0	0	0	0	0	0		0	0
0	0	0	0	0	0		0	0
0	0	0	0	0	0		0	0
0	0	0	0	0	0		0	0
0	0	0	0	0	0		0	0
0	0	0	0	0	0		0	0
0	0	0	1,200	6	7,200		6	7,200
0	0	0	0	0	0		0	0
0	0	0	0	0	0		0	0
0	0	0	0	0	0		0	0
0	0	0	0	0	0		0	0
0	0	0	0	0	0		0	0
0	0	0	0	0	0		0	0
0	0	0	135	6	810		6	810
0	0	0	0	0	0		0	0
		0			7,520			7,520
0	0	0	1,200	2	2,400		2	2,400
0	0	0	0	0	0		0	0
0	0	0	0	0	0		0	0
0	0	0	0	0	0		0	0
0	0	0	0	0	0		0	0
0	0	0	0	0	0		0	0
0	0	0	60	2	120		2	120
0	0	0	500	6	3,000		6	3,000
0	0	0	500	4	2,000		4	2,000
		0			7,550			7,550
0	0	0	1,200	3	3,600		3	3,600
0	0	0	100	3	300		3	300
0	0	0	1,200	1	1,200		1	1,200
0	0	0	800	1	800		1	800
0	0	0	1,400	1	1,400		1	1,400
0	0	0	250	1	250		1	250
0	0	0	0	0	0		0	0
0	0	0	0	0	0		0	0
		0			4,500			4,500
0	0	0	1,500	1	1,500		1	1,500
0	0	0	0	0	0		0	0
0	0	0	1,500	2	3,000		2	3,000
		0			12,500			12,500
0	0	0	8,000	1	8,000		1	8,000
0	0	0	0	0	0		0	0
0	0	0	0	0	0		0	0
0	0	0	250	1	250		1	250
0	0	0	0	0	0		0	0
0	0	0	125	1	125	125	1	125
0	0	0	125	1	125		1	125
0	0	0	0	0	0		0	0
0	0	0	0	0	0		0	0
0	0	0	1,000	1	1,000		1	1,000

Middle School Space Summary

MSBA Guidelines (refer to MSBA Educational Program & Space Standard Guidelines)			
ROOM NFA ¹	# OF RMS	area totals	Comments
		36,560	
950	28	26,600	850 SF min - 950 SF max
500	2	1,000	
1,200	7	8,400	1 period / day / student
80	7	560	
		9,060	
950	6	5,700	assumed 8% of pop. in self-contained SPED
60	6	360	
500	4	2,000	1/2 size Gent. Cirm.
500	2	1,000	1/2 size Gent. Cirm.
		4,400	
1,200	2	2,400	assumed use - 50% population 2 times / week
150	2	300	
1,500	1	1,500	assumed use - 50% population 2 times / week
200	1	200	
		6,400	
1,200	2	2,400	Assumed use - 25% Population - 5 times/week
2,000	2	4,000	Assumed use - 25% Population - 5 times/week
		8,400	
6,000	1	6,000	
150	1	150	
250	1	250	



Proposed Space Summary - Middle Schools

Mountview Middle School	Existing Conditions		
ROOM TYPE	ROOM NFA ¹	# OF RMS	area totals
Locker Rooms - Boys w/ Toilets	1,082	1	1,082
Stage			
Stage Storage			
MEDIA CENTER			2,429
Media Center / Reading Room			
Media Center / Reading Room 230	2,078	1	2,078
Common Room			
Media Storage	351	1	351
DINING & FOOD SERVICE			6,659
Cafetorium / Dining	3,541	1	3,541
Stage	875	1	875
Chair / Table / Equipment Storage	164	1	164
kitchen Storage	147	1	147
Kitchen	1,932	1	1,932
Staff Lunch Room			0
MEDICAL			567
Medical Suite Toilet			
Nurses' Office / Waiting Room	474	1	474
Nurse Storage	93	1	93
Examination Room / Resting			
ADMINISTRATION & GUIDANCE			2,336
General Office / Waiting Room / Toilet	338	1	
Teachers' Mail and Time Room			
Duplicating Room			
Records Room			
Principal's Office w/ Conference Area	161	1	161
Principal's Secretary / Waiting			0
Assistant Principal's Office - AP1	141	1	141
Assistant Principal's Office - AP2	93	1	93
Supervisory / Spare Office			0
Conference Room	178	1	178
Guidance Office	93	1	93
Guidance Waiting Room			0
Guidance Storeroom			0
Guidance Conference Room			
Storage 205	695	1	695
Storage	90	1	90
Admin Storage	62	1	62
Teachers' Work Room	537	1	537
Teachers' Work Room	124	1	124
Teachers' Prep Room	162	1	162
CUSTODIAL & MAINTENANCE			1,951
Custodian's Office	160	1	160
Custodian's Workshop	355	1	355
Custodian's Storage			0
Recycling Room / Trash			0
Receiving and General Supply	742	1	742
Storeroom	97	1	97
Storeroom	77	1	77
Storeroom	93	1	93
Storeroom	114	1	114
Storeroom	313	1	313
OTHER			116
Other (Specify)			
Network / Telecom Room	116	1	116
Total Building Net Floor Area (NFA)			58,604

Version
11.24.2010

PROPOSED								
Existing to Remain/Renovated			New			Total		
ROOM NFA ¹	# OF RMS	area totals	ROOM NFA ¹	# OF RMS	area totals	ROOM NFA ¹	# OF RMS	area totals
0	0	0	1,000	1	1,000		1	1,000
			1,600	1	1,600	1,600	1	1,600
			400	1	400	400	1	400
		0			4,850			4,850
0	0	0	950	1	950		1	950
0	0	0	0	0	0		0	0
			650	6	3,900		6	3,900
0	0	0	0	0	0		0	0
		0			7,750			7,750
0	0	0	4,500	1	4,500		1	4,500
0	0	0	0	0	0		0	0
0	0	0	450	1	450		1	450
0	0	0	0	0	0		0	0
0	0	0	2,500	1	2,500		1	2,500
0	0	0	300	1	300		1	300
		0			670			670
0	0	0	60	1	60		1	60
0	0	0	250	1	250		1	250
0	0	0	0	0	0		0	0
0	0	0	90	4	360		4	360
		0			3,550			3,550
0	0	0	450	1	450		1	450
0	0	0	100	1	100		1	100
0	0	0	150	1	150		1	150
0	0	0	200	1	200		1	200
0	0	0	300	1	300		1	300
0	0	0	0	0	0		0	0
0	0	0	150	1	150		1	150
0	0	0	150	1	150		1	150
0	0	0	150	1	150		1	150
0	0	0	350	1	350		1	350
0	0	0	150	2	300		2	300
0	0	0	100	1	100		1	100
0	0	0	50	1	50		1	50
			200	1	200	200	1	200
0	0	0	0	0	0		0	0
0	0	0	0	0	0		0	0
0	0	0	0	0	0		0	0
0	0	0	300	3	900		3	900
0	0	0	0	0	0		0	0
0	0	0	0	0	0		0	0
		0			2,076			2,076
0	0	0	150	1	150		1	150
0	0	0	250	1	250		1	250
0	0	0	375	1	375		1	375
0	0	0	400	1	400		1	400
0	0	0	367	1	367		1	367
0	0	0	534	1	534		1	534
0	0	0	0	0	0		0	0
0	0	0	0	0	0		0	0
0	0	0	0	0	0		0	0
0	0	0	0	0	0		0	0
0	0	0	0	0	0		0	0
		0			200			200
							0	0
				1	200		1	200
		0			86,476			86,476

Middle School Space Summary

MSBA Guidelines (refer to MSBA Educational Program & Space Standard Guidelines)			
ROOM NFA¹	# OF RMS	area totals	Comments
1,000	2	2,000	
		4,980	
4,980	1	4,980	
		10,167	
6,000	1	6,000	2 seatings - 15SF per seat
1,600	1	1,600	
467	1	467	
2,100	1	2,100	1600 SF for first 300 + 1 SF/student Add'l
300			
		710	
60	1	60	
250	1	250	
100	4	400	
		3,600	
500	1	500	
100	1	100	
200	1	200	
200	1	200	
375	1	375	
125	1	125	
150	1	150	
150	1	150	
150	1	150	
350	1	350	
150	4	600	
100	1	100	
50	1	50	
550	1	550	
		2,075	
150	1	150	
250	1	250	
375	1	375	
400	1	400	
367	1	367	
534	1	534	
		-	
		200	
200	1	200	
		86,552	

Proposed Space Summary - Middle Schools

Mountview Middle School			
Existing Conditions			
ROOM TYPE	ROOM NFA ¹	# OF RMS	area totals
Proposed Student Capacity / Enrollment			
Total Building Gross Floor Area (GFA) ²			91,137
Grossing factor (GFA/NFA)			1.56

Total Existing Building
Gross Floor Area =
91,137 SF

PROPOSED								
Existing to Remain/Renovated			New			Total		
ROOM NFA ¹	# OF RMS	area totals	ROOM NFA ¹	# OF RMS	area totals	ROOM NFA ¹	# OF RMS	area totals
					127,984			127,984
					1.48			1.48

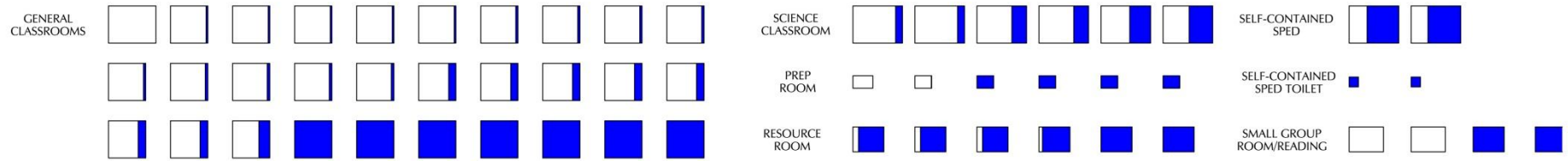
Total Proposed Building Gross
Floor Area = 127,984 SF

MSBA Guidelines (refer to MSBA Educational Program & Space Standard Guidelines)			
ROOM NFA ¹	# OF RMS	area totals	Comments
		800	
		128,000	
		1.48	

Proposed Student
Capacity/Enrollment
= 800

Total MSBA
Guideline Building
Gross Floor Area =
128,000 SF

GENERAL CLASSROOM CLUSTERS



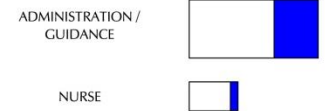
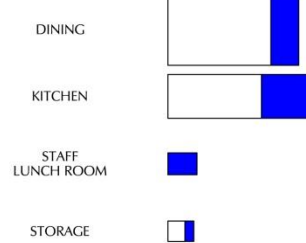
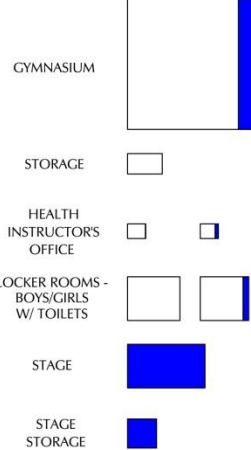
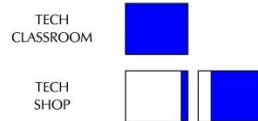
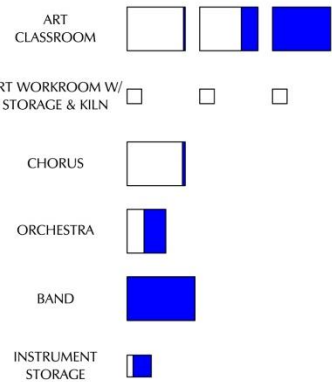
ART & MUSIC

VOCATION & TECHNOLOGY

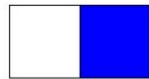
PHYSICAL EDUCATION

DINING & FOOD SERVICE

ADMINISTRATION



MEDIA CENTER/READING ROOM



CUSTODIAL & MAINTENANCE



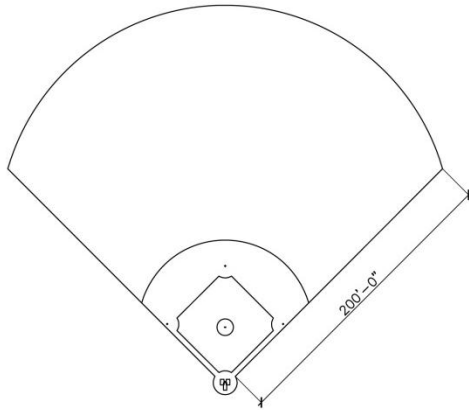
CIRCULATION, MECHANICAL, TOILETS, PARTITIONS ETC.



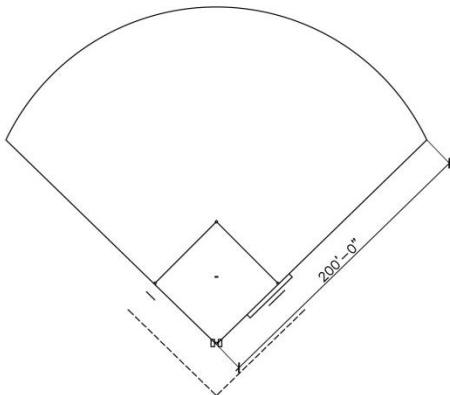
	TOTAL BUILDING AREA EXISTING	91,137 S.F.
	TOTAL BUILDING AREA PER MSBA/PROPOSED GUIDELINE	127,984 S.F.

PRELIMINARY DESIGN PROGRAM Site Development Requirements

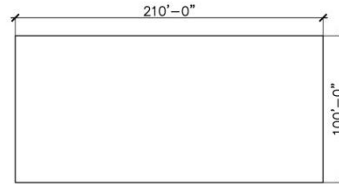
LITTLE LEAGUE
BASEBALL FIELD



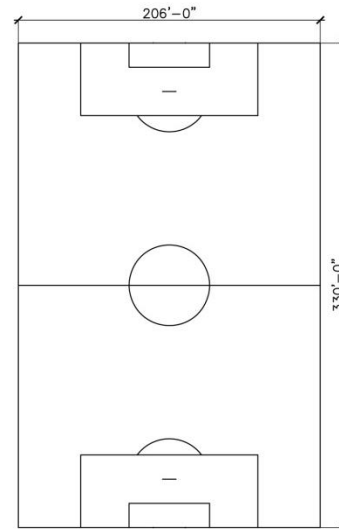
SOFTBALL FIELD



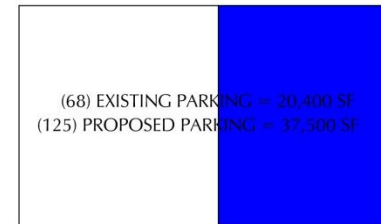
PRACTICE FIELD



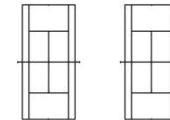
FOOTBALL / SOCCER /
FIELD HOCKEY



PARKING SPACE



TENNIS COURT



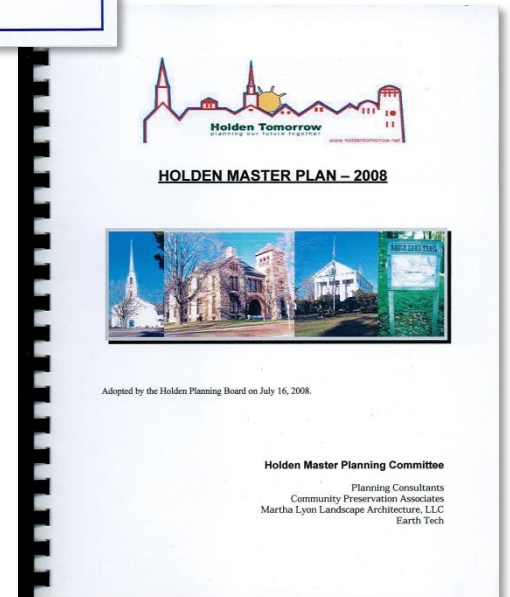
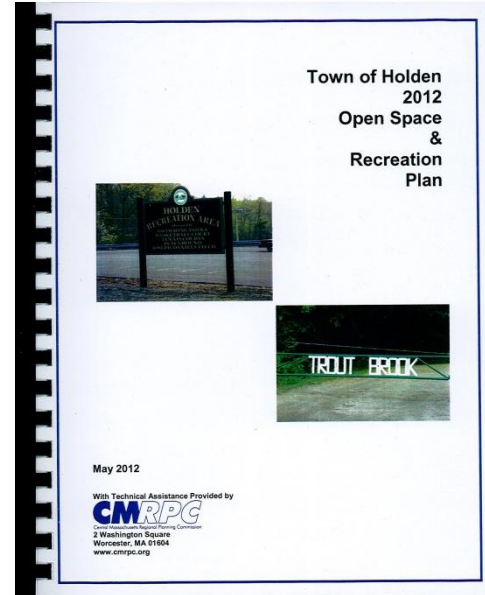
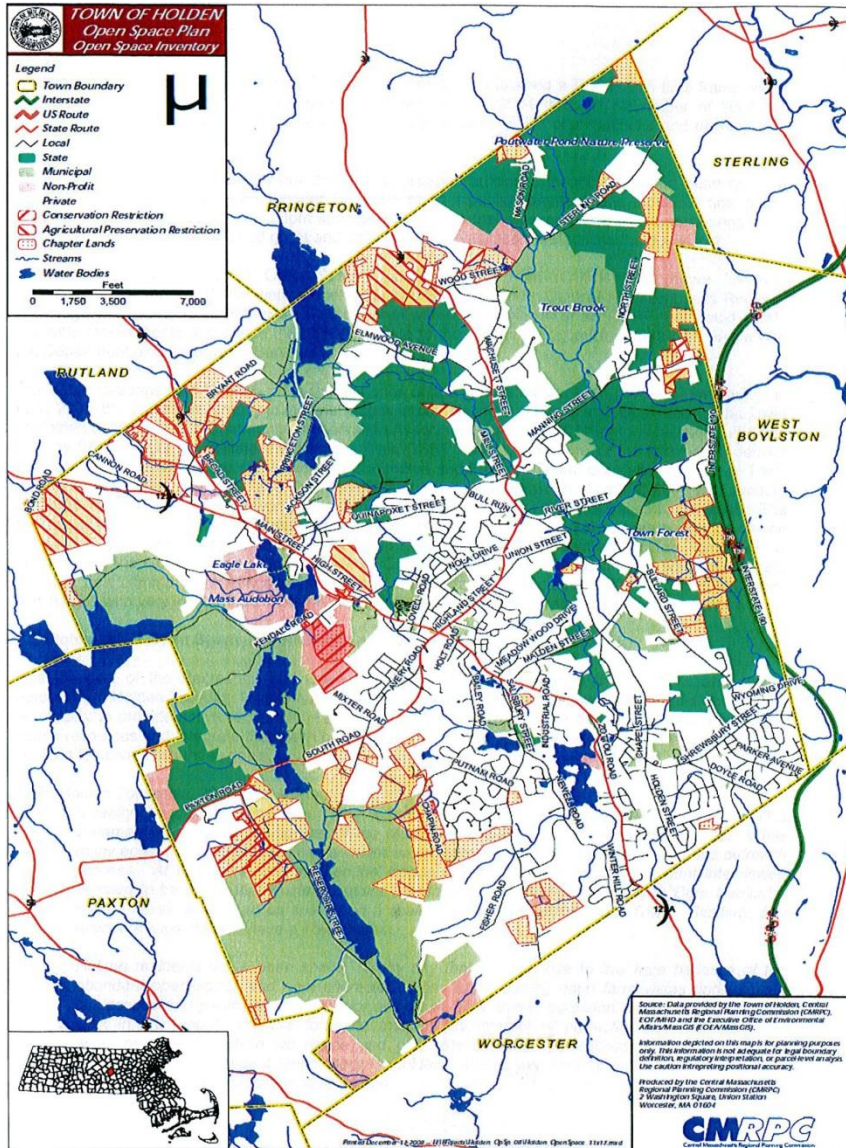
BASKETBALL COURT



EXISTING AREA



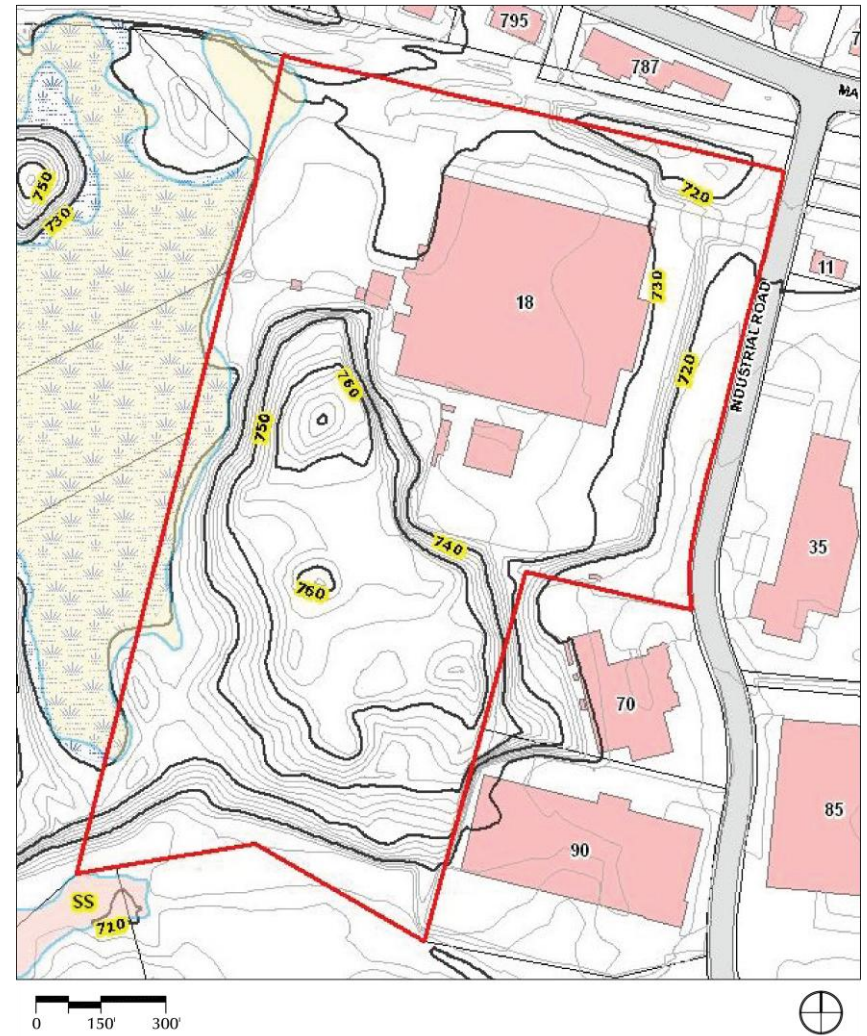
PROPOSED AREA



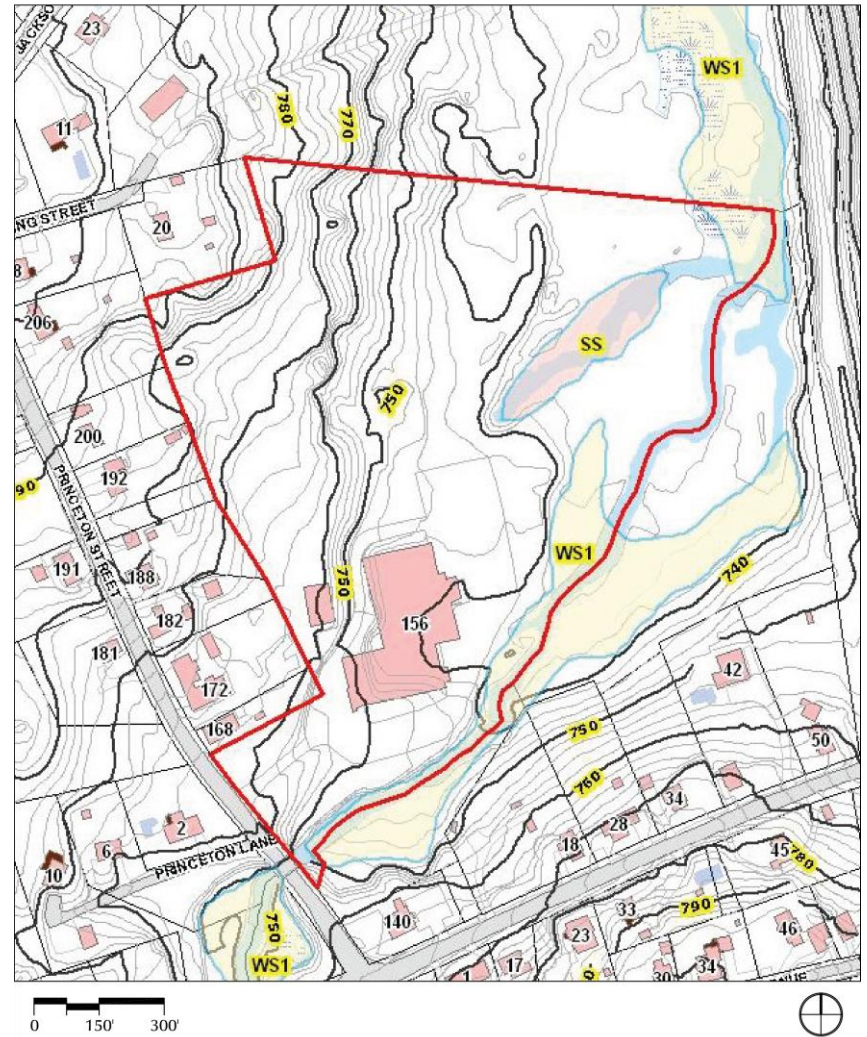
100 Industrial Drive

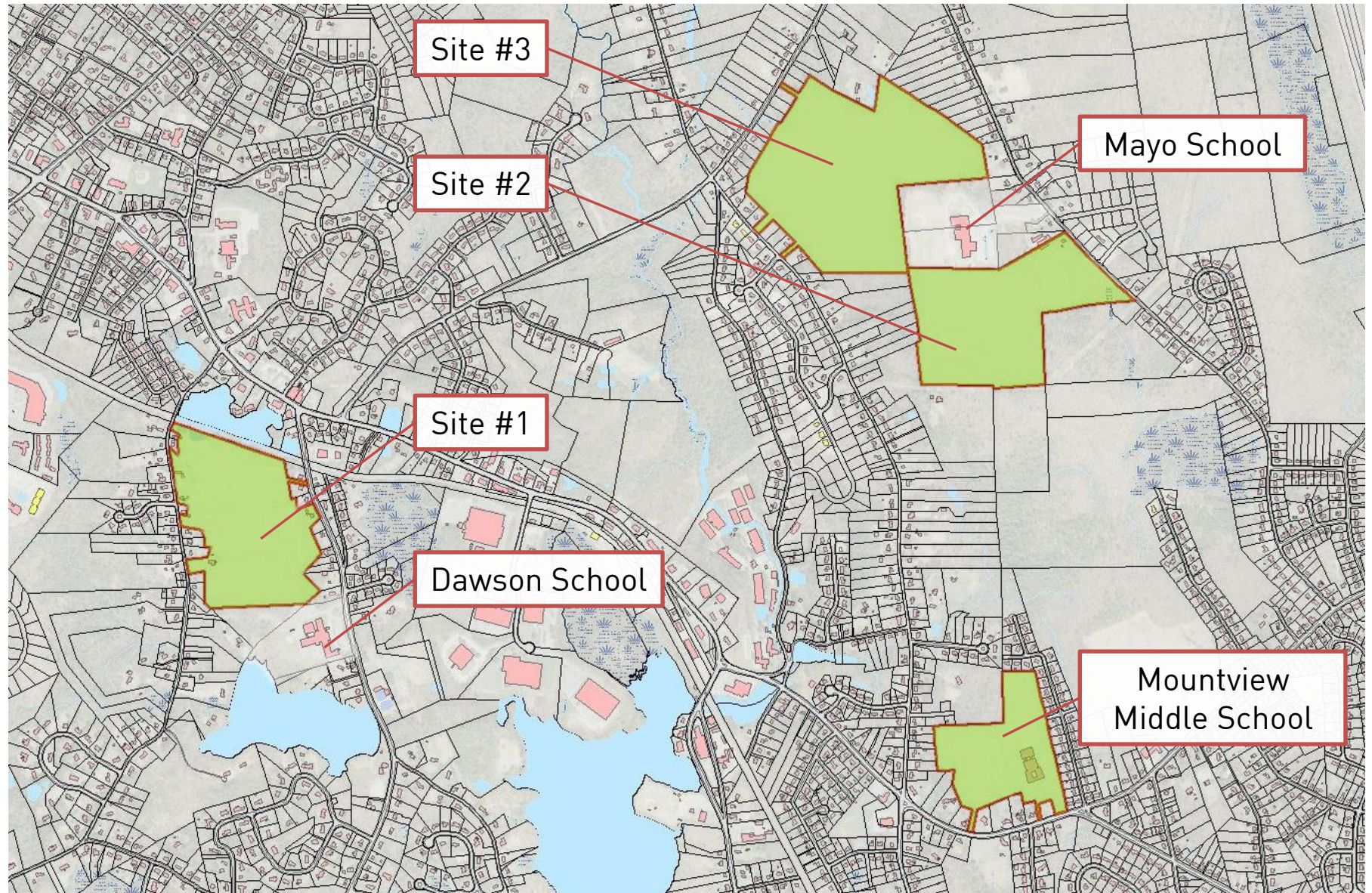


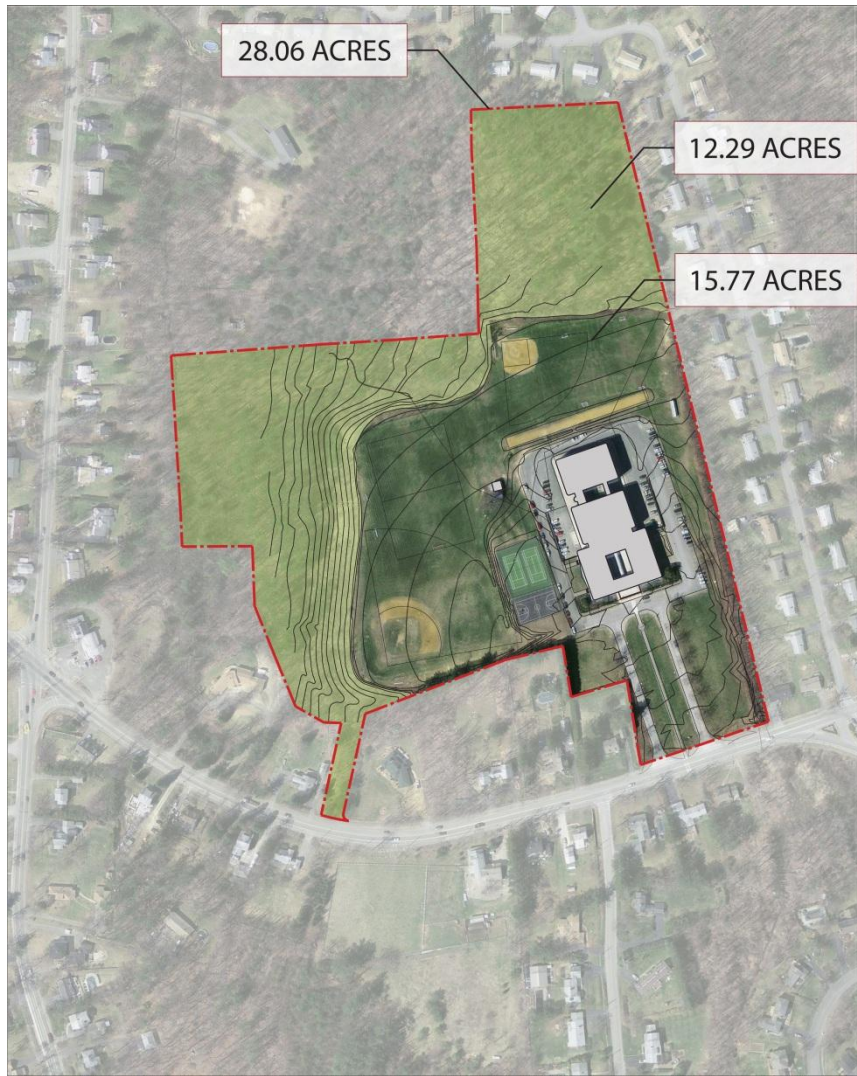
Reed, Roll, and Thread



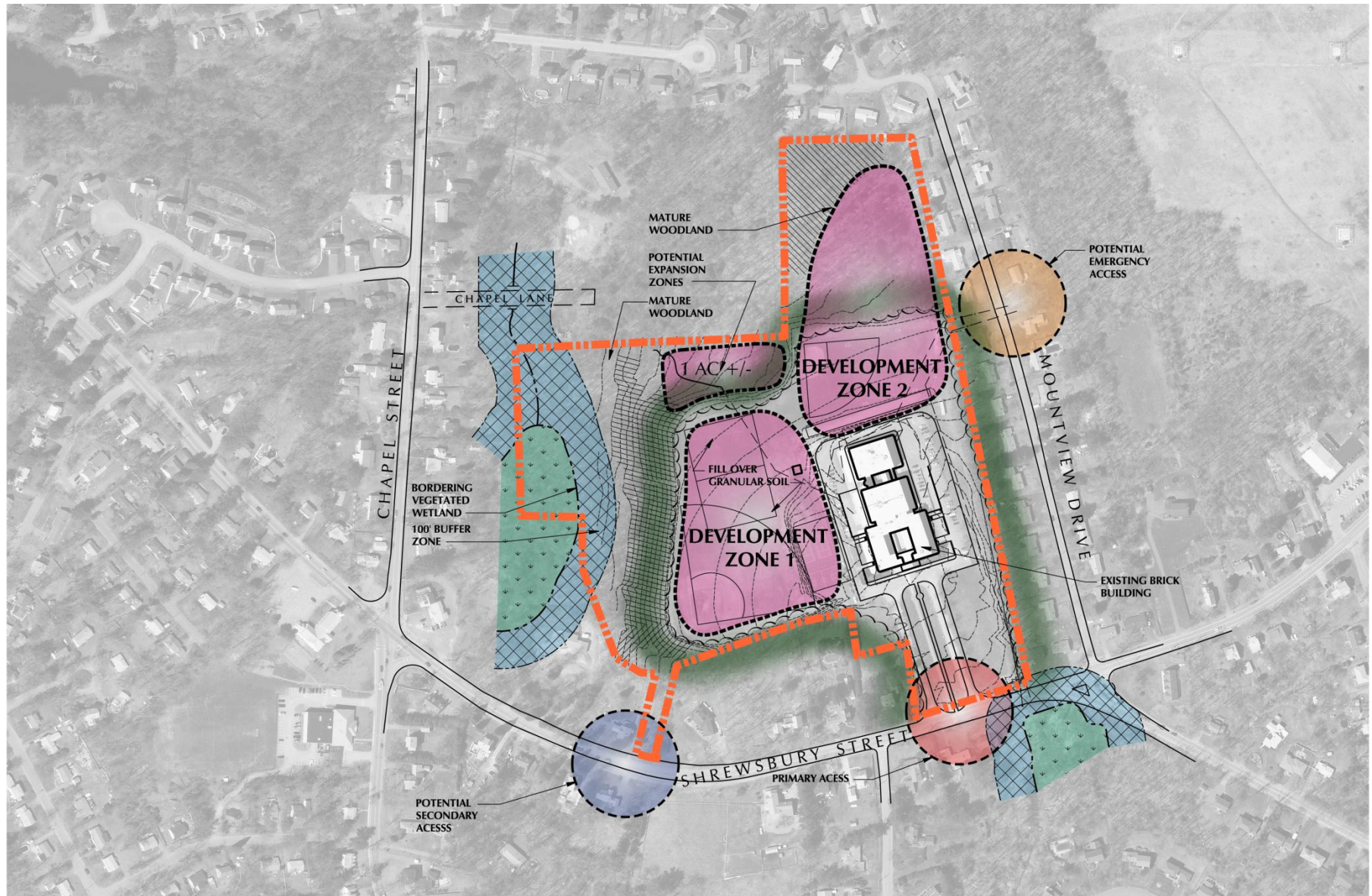
Electronic Controls Corporation

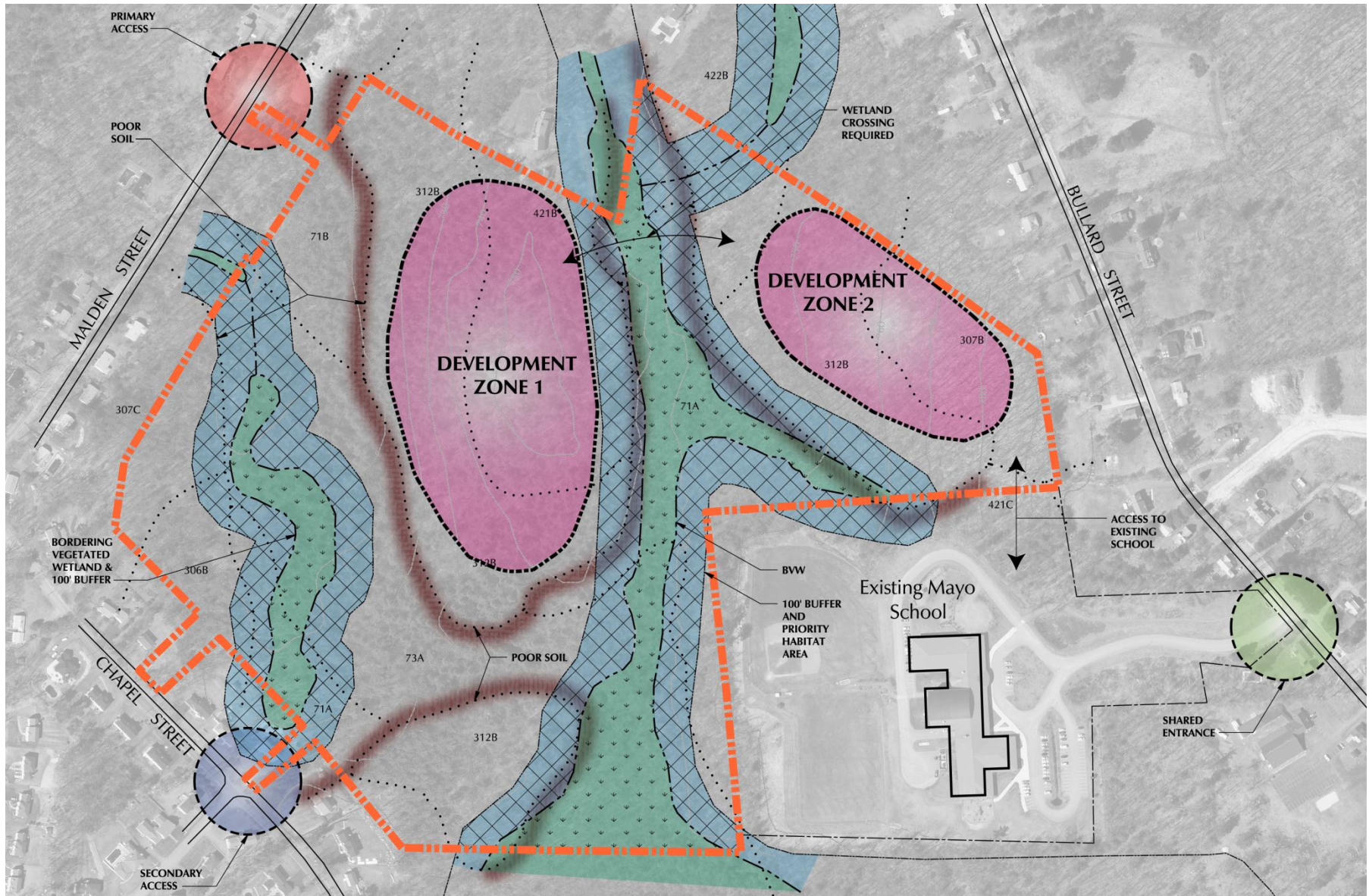












Task Name	Duration	Start	Finish
1. PROJECT KICK-OFF MEETING	1 day	Mon 5/14/12	Mon 5/14/12
2. LPA AND CONSULTANT WALK THROUGH	1 day	Thu 5/24/12	Thu 5/24/12
3. INITIAL SPACE SUMMARY	7 days	Thu 5/24/12	Fri 6/1/12
4. EVALUATION OF EXISTING CONDITIONS	7 days	Thu 5/24/12	Fri 6/1/12
5. SITE DEVELOPMENT REQUIREMENTS	15 days	Thu 5/24/12	Wed 6/13/12
6. EVALUATION OF ALTERNATIVES	25 days	Wed 5/30/12	Tue 7/3/12
7. GEOTECHNICAL BORINGS	1 day	Wed 5/30/12	Wed 5/30/12
8. LPA TEACHER INPUT MEETING	1 day	Tue 6/5/12	Tue 6/5/12
9. TRAFFIC STUDY	1 day	Thu 6/7/12	Thu 6/7/12
10. ALTERNATIVE SITES MEETING WITH TOWN OFFICIALS	1 day	Wed 6/13/12	Wed 6/13/12
11. GREEN CHARRETTE MEETING	1 day	Thu 6/21/12	Thu 6/21/12
12. PROPOSED SPACE SUMMARY BY WRSD	8 days	Thu 6/21/12	Mon 7/2/12
13. LPA PRESENT PDP PROGRESS TO SCHOOL BUILDING COMMITTEE	26 days	Tue 6/26/12	Tue 7/31/12
14. OPM REVIEW PDP PROGRESS SUBMITTALS	31 days	Tue 7/3/12	Tue 8/14/12
15. LPA PRESENTATION TO PUBLIC, BOARD OF SELECTMAN, FINANCE COMMITTEE, & TOUR BUILDING	1 day	Tue 7/17/12	Tue 7/17/12
16. LPA DELIVER PDP TO SBC FOR REVIEW	11 days	Tue 7/24/12	Tue 8/7/12
17. SCHOOL BUILDING COMMITTEE VOTE ON PDP	1 day	Tue 8/7/12	Tue 8/7/12
18. SIGNED LOCAL ACTIONS APPROVAL CERTIFICATE	1 day	Tue 8/7/12	Tue 8/7/12
19. PDP TO MSBA	0 days	Wed 8/15/12	Wed 8/15/12
20. MSBA REVIEW PDP	32 days	Wed 8/15/12	Thu 9/27/12
21. LPA CREATE PSR	19 days	Thu 8/16/12	Tue 9/11/12
22. OPM REVIEW PSR SUBMITTALS	13 days	Thu 8/30/12	Mon 9/17/12
23. SBC VOTE ON PSR	1 day	Tue 9/18/12	Tue 9/18/12
24. SIGNED LOCAL ACTIONS APPROVAL CERTIFICATE	1 day	Tue 9/18/12	Tue 9/18/12
25. LPA PRESENT PSR TO SCHOOL BUILDING COMMITTEE	1 day	Thu 9/20/12	Thu 9/20/12
26. PSR TO MSBA	0 days	Thu 9/27/12	Thu 9/27/12
27. MSBA REVIEW PSR	34 days	Fri 9/28/12	Wed 11/14/12
28. FACILITIES ASSESSMENT SUBCOMMITTEE MEETING	1 day	Wed 10/17/12	Wed 10/17/12
29. MSBA BRD VOTE ON PSR	0 days	Wed 11/14/12	Wed 11/14/12
30. DEVELOP SCHEMATIC DESIGN PACKAGE AND BUDGET	33 days	Thu 11/15/12	Mon 12/31/12
31. SD SUBMITTALS DUE TO MSBA	0 days	Wed 1/2/13	Wed 1/2/13
32. MSBA BOARD VOTE ON SCHEMATIC DESIGN	0 days	Tue 3/5/13	Tue 3/5/13

Recommendations of Distinct Alternatives

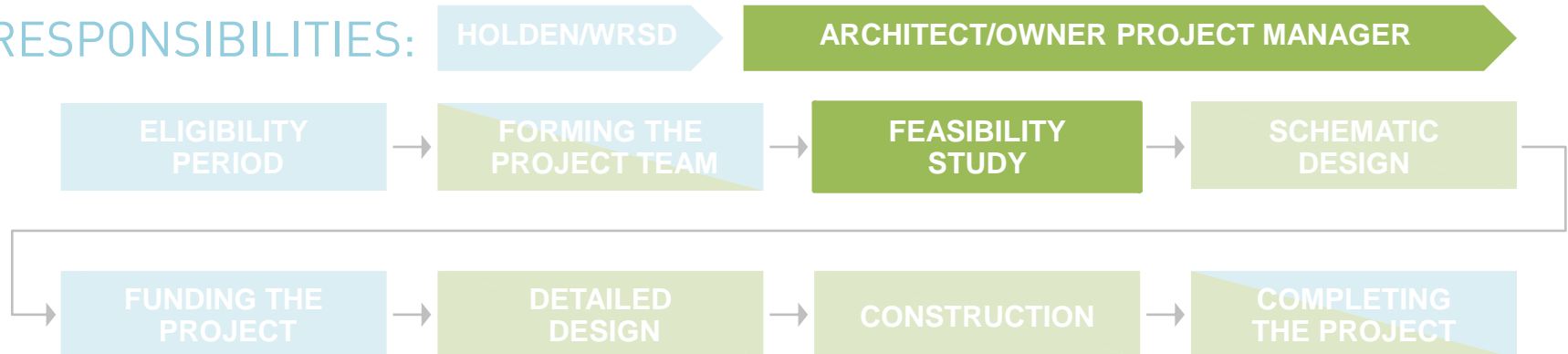
- RENOVATION / ADDITION
- NEW CONSTRUCTION ON EXISTING SITE
- NEW CONSTRUCTION ON ALTERNATE SITE

Preferred Schematic Report (PSR)

- Introduction
- Evaluation of Existing Conditions
- Site Development Requirements
- Final Evaluation of Distinct Alternatives
- Preferred Solution
- Local Actions and Approvals

Will be submitted to MSBA on September 27th, 2012

RESPONSIBILITIES:



Schematic Design

Will be submitted to MSBA in January of 2013

Funding the Project

MSBA Approves Feasibility Study and offers town a Funding Agreement in March of 2013

Town has 120 days to approve funding once offer is received

Detailed Design

July of 2013 – March of 2014

Construction

September of 2015 to August of 2016

Completing the Project

60 days after Certificate of Occupancy is received

RESPONSIBILITIES:

HOLDEN/WRSD

ARCHITECT/OWNER PROJECT MANAGER

