

ENVIRONMENTAL JUSTICE MAP

OPEN SPACE AND RECREATION PLAN

LEGEND

Environmental Justice 2010 Populations

EJ Criteria, by Block

Minority

Income

Minority, Income and English isolation

 Town Boundaries

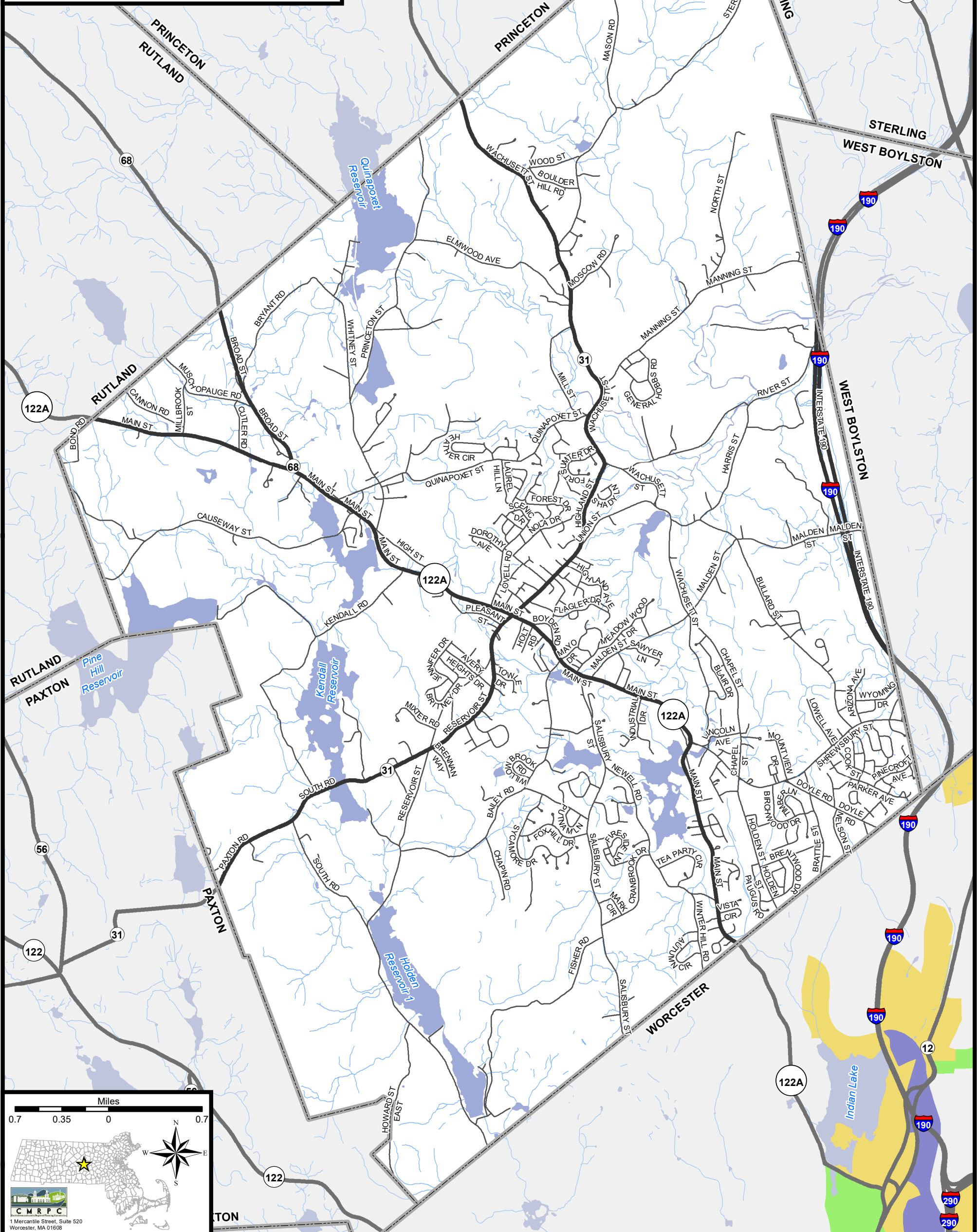
 Water Bodies

Streams

 Major Road Local Road

Source: Data provided by the Town of Holden, CMRPC, massDOT and the Office of Geographic Information (MassGIS), Commonwealth of Massachusetts, Information Technology Division.

Information depicted on this map is for planning purposes only. This information is not adequate for legal boundary definition, regulatory interpretation, or parcel-level analysis. Use caution interpreting positional accuracy.



Town of Holden, Massachusetts

ZONING DISTRICTS

OPEN SPACE AND RECREATION PLAN

LEGEND

Zoning Districts

Business Office-
Professional (BO-P)

Commercial (C)

Industrial (I)

Industrial-Quarry (I-Q)

Residential - Rural (R-40)

Residential - Suburban 1
(R-1)

Residential - Suburban 2
(R-2)

Residential - Suburban 3
(R-10)

Residential - Multi-Family
(R-M)

Village District (V)



Town Boundaries



Major Road



Water Bodies



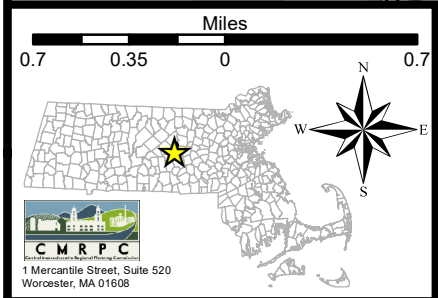
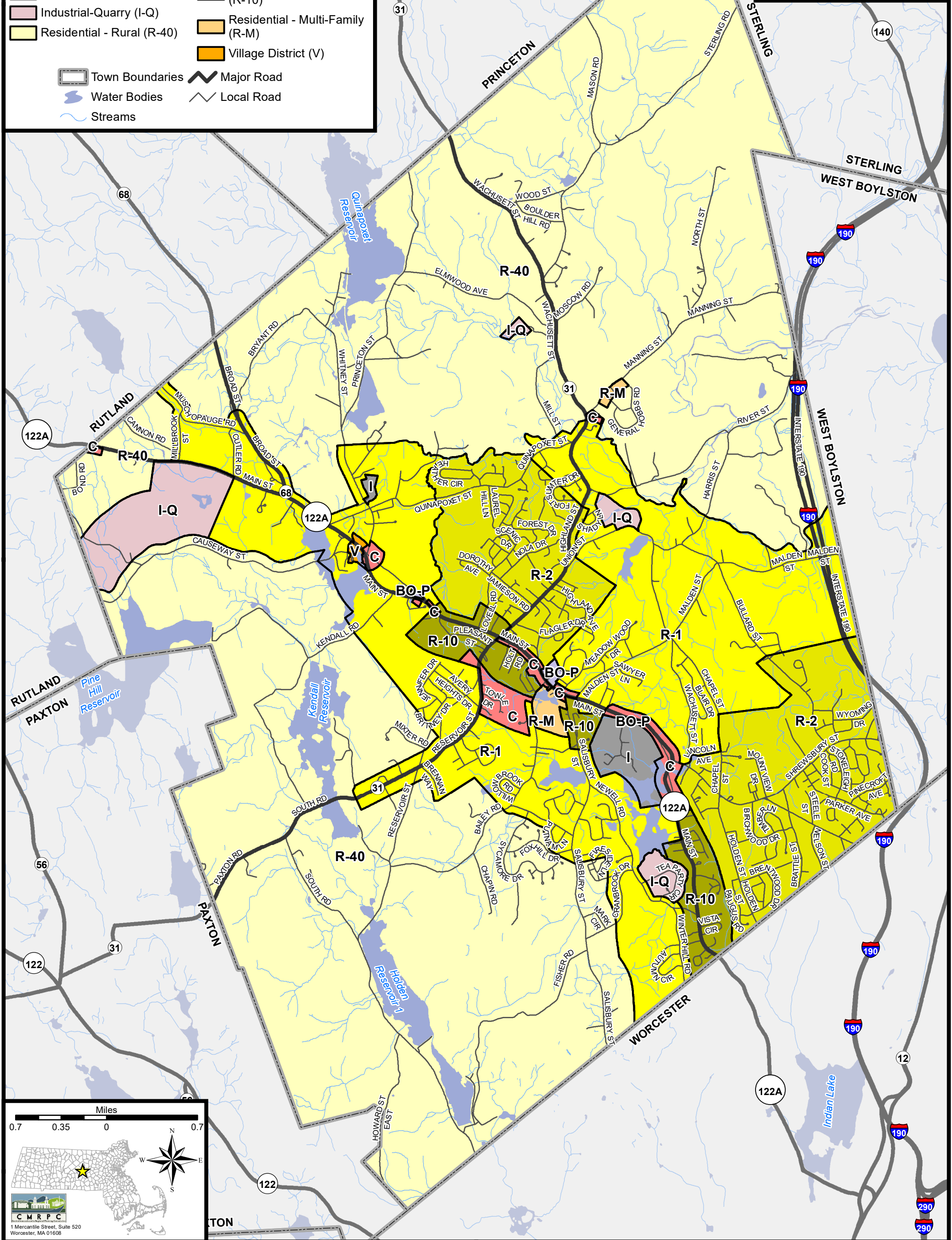
Local Road



Streams

Source: Data provided by the Town of Holden, CMRPC, massDOT and the Office of Geographic Information (MassGIS), Commonwealth of Massachusetts, Information Technology Division.

Information depicted on this map is for planning purposes only. This information is not adequate for legal boundary definition, regulatory interpretation, or parcel-level analysis. Use caution interpreting positional accuracy.



Town of Holden, Massachusetts

SOILS & GEOLOGIC FEATURES

OPEN SPACE AND RECREATION PLAN

NRCS SSURGO-Certified Soils (WORC. NW)

(Dominant Drainage Class)

- Excessively drained
- Somewhat excessively drained
- Well drained
- Moderately well drained
- Poorly drained
- Very poorly drained
- Not Classified

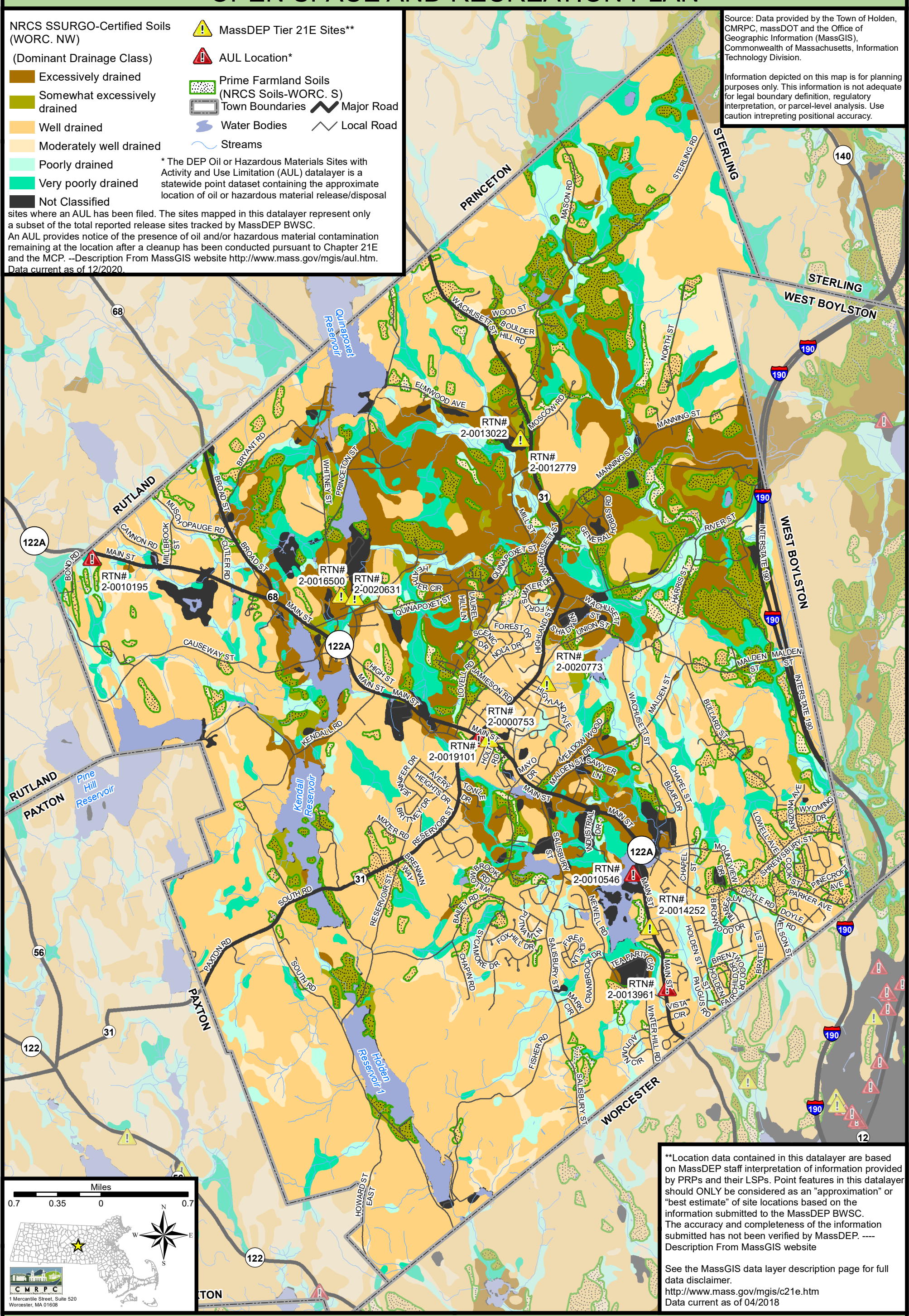
- MassDEP Tier 21E Sites**
- AUL Location*
- Prime Farmland Soils (NRCS Soils-WORC. S)
- Town Boundaries
- Water Bodies
- Streams

* The DEP Oil or Hazardous Materials Sites with Activity and Use Limitation (AUL) datalayer is a statewide point dataset containing the approximate location of oil or hazardous material release/disposal sites where an AUL has been filed. The sites mapped in this datalayer represent only a subset of the total reported release sites tracked by MassDEP BWSC. An AUL provides notice of the presence of oil and/or hazardous material contamination remaining at the location after a cleanup has been conducted pursuant to Chapter 21E and the MCP. --Description From MassGIS website <http://www.mass.gov/mgis/aul.htm>. Data current as of 12/2020.

- Major Road
- Local Road

Source: Data provided by the Town of Holden, CMRPC, massDOT and the Office of Geographic Information (MassGIS), Commonwealth of Massachusetts, Information Technology Division.

Information depicted on this map is for planning purposes only. This information is not adequate for legal boundary definition, regulatory interpretation, or parcel-level analysis. Use caution interpreting positional accuracy.



Miles

0.7 0.35 0

CMRPC

1 Mercantile Street, Suite 520

Worcester, MA 01608

**Location data contained in this datalayer are based on MassDEP staff interpretation of information provided by PRPs and their LSPs. Point features in this datalayer should ONLY be considered as an "approximation" or "best estimate" of site locations based on the information submitted to the MassDEP BWSC. The accuracy and completeness of the information submitted has not been verified by MassDEP. ---- Description From MassGIS website

See the MassGIS data layer description page for full data disclaimer.

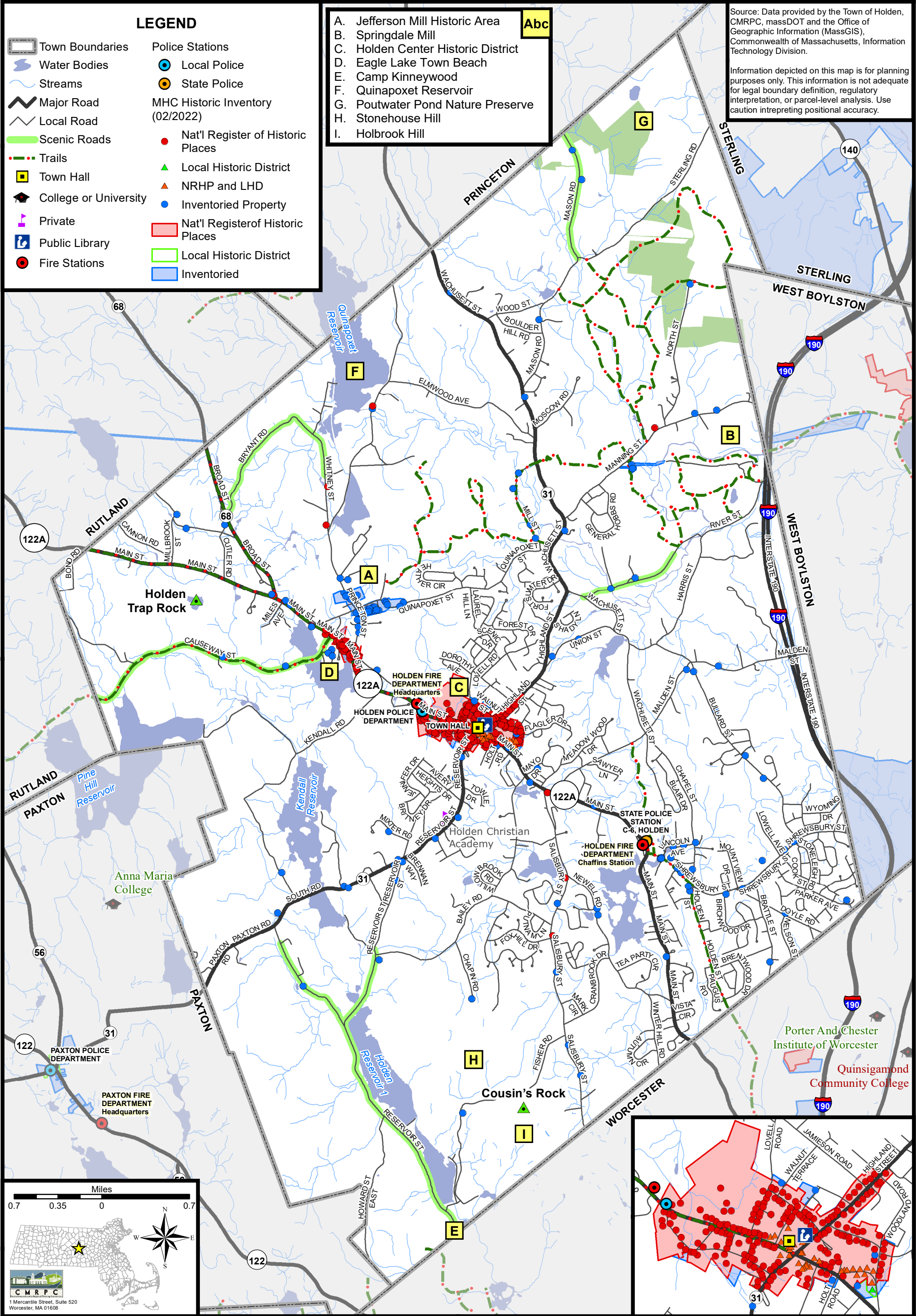
<http://www.mass.gov/mgis/c21e.htm>

Data current as of 04/2018

Town of Holden, Massachusetts

UNIQUE FEATURES

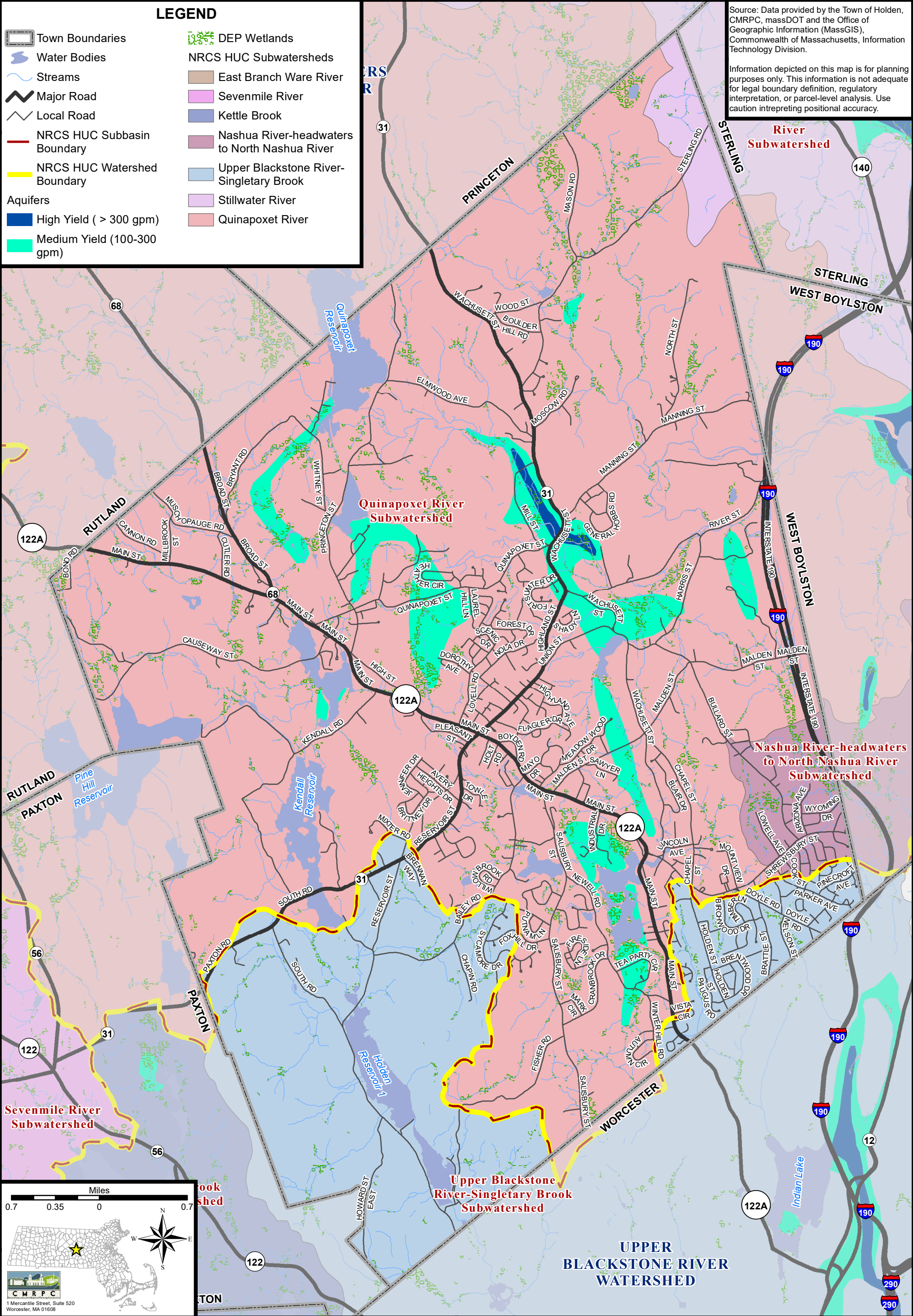
OPEN SPACE AND RECREATION PLAN



Town of Holden, Massachusetts

WATER RESOURCES MAP 1

OPEN SPACE AND RECREATION PLAN



WATER RESOURCES MAP 2

OPEN SPACE AND RECREATION PLAN

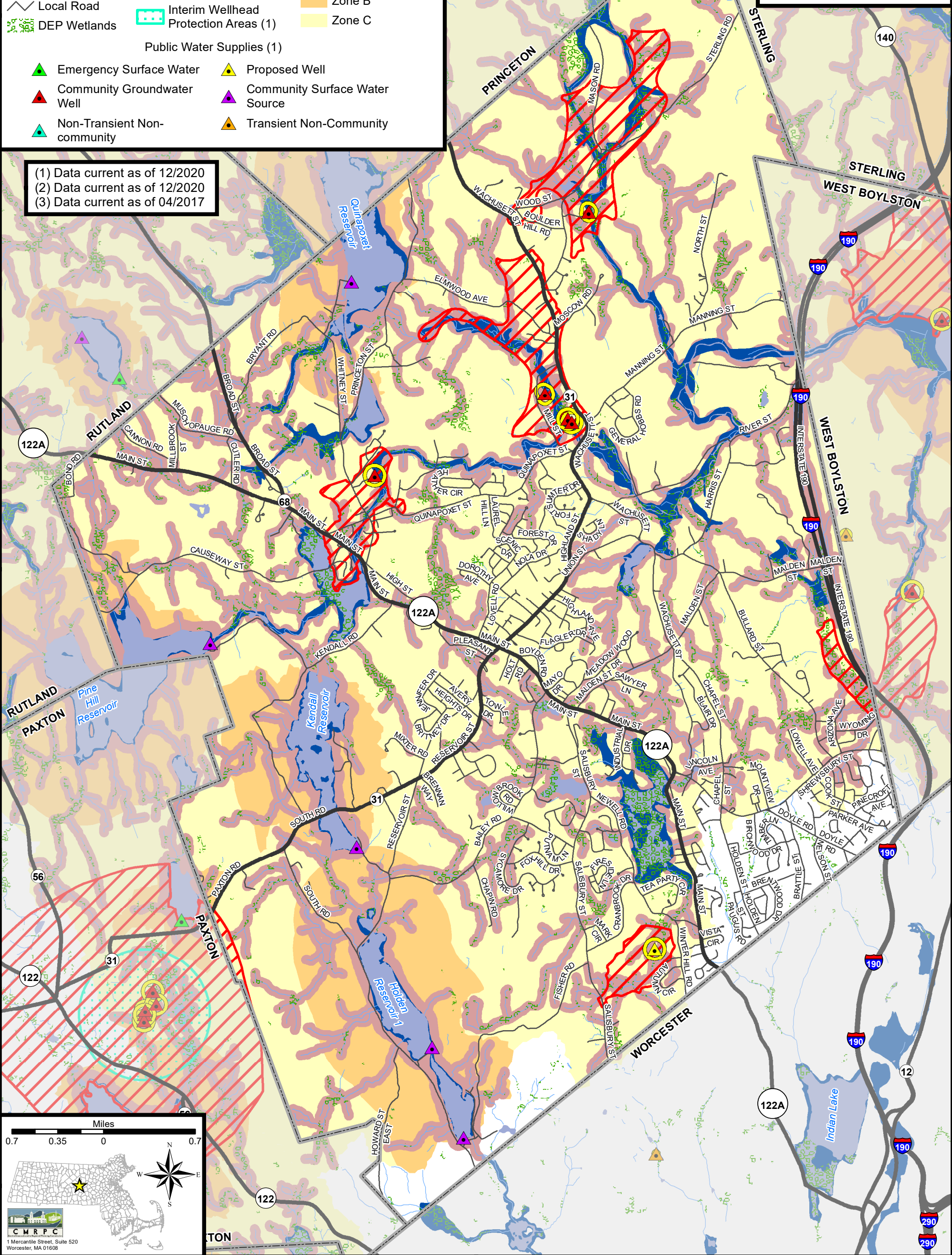
LEGEND

- | | | |
|-----------------------------|--|--|
| Town Boundaries | DEP Approved Zone I (1) | 100-year Flood |
| Water Bodies | Approved Wellhead Protection Areas (Zone II) (1) | Surface Water Supply Protection Area (2) |
| Streams | Interim Wellhead Protection Areas (1) | Zone |
| Major Road | | Zone B |
| Local Road | | Zone C |
| DEP Wetlands | | |
| Public Water Supplies (1) | | |
| Emergency Surface Water | Proposed Well | |
| Community Groundwater Well | Community Surface Water Source | |
| Non-Transient Non-community | Transient Non-Community | |

- (1) Data current as of 12/2020
(2) Data current as of 12/2020
(3) Data current as of 04/2017

Source: Data provided by the Town of Holden, CMRPC, massDOT and the Office of Geographic Information (MassGIS), Commonwealth of Massachusetts, Information Technology Division.

Information depicted on this map is for planning purposes only. This information is not adequate for legal boundary definition, regulatory interpretation, or parcel-level analysis. Use caution interpreting positional accuracy.



Town of Holden, Massachusetts

OPEN SPACE INVENTORY

OPEN SPACE AND RECREATION PLAN

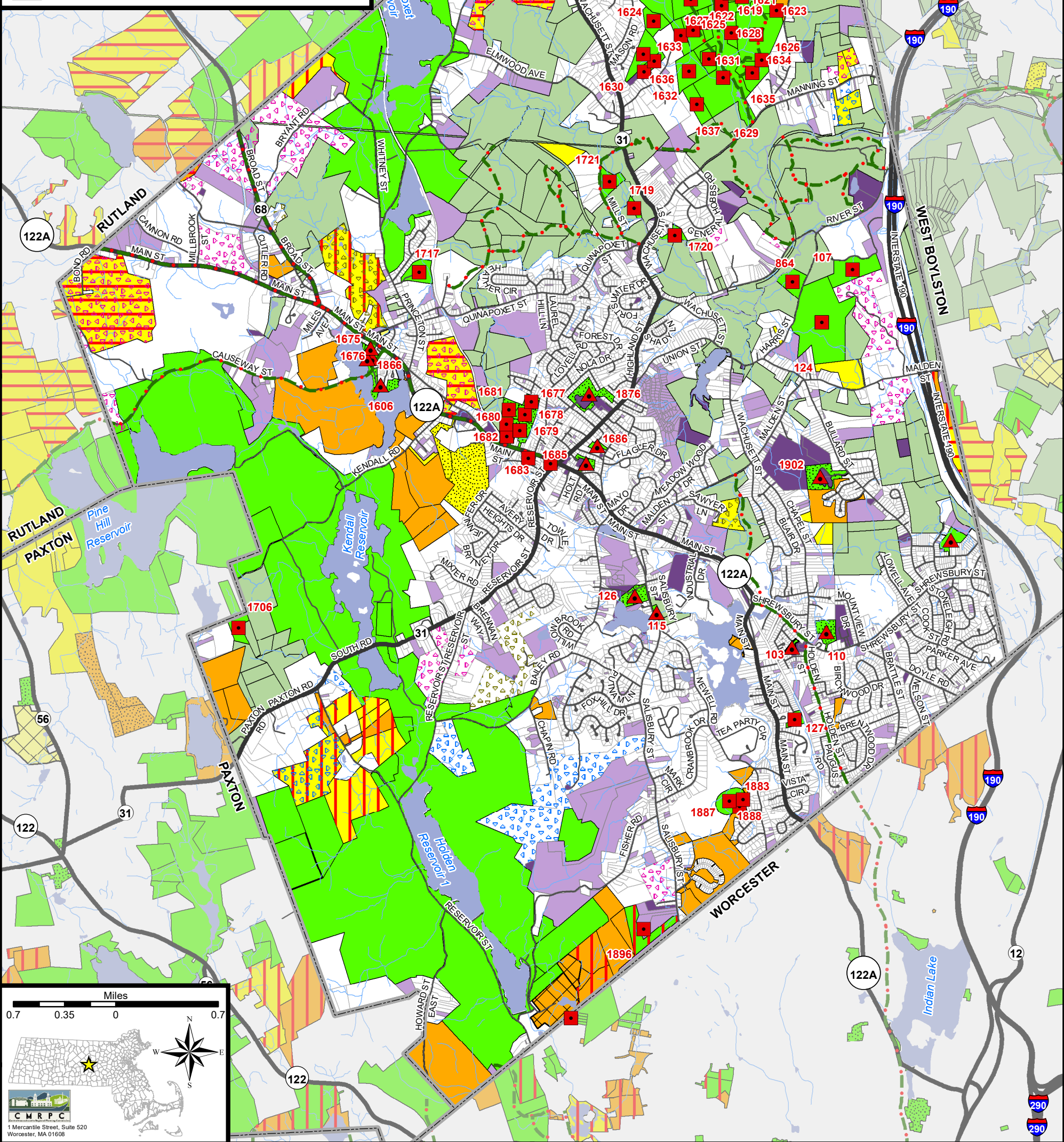
(*) Based on FY2020
CAMA data.

LEGEND



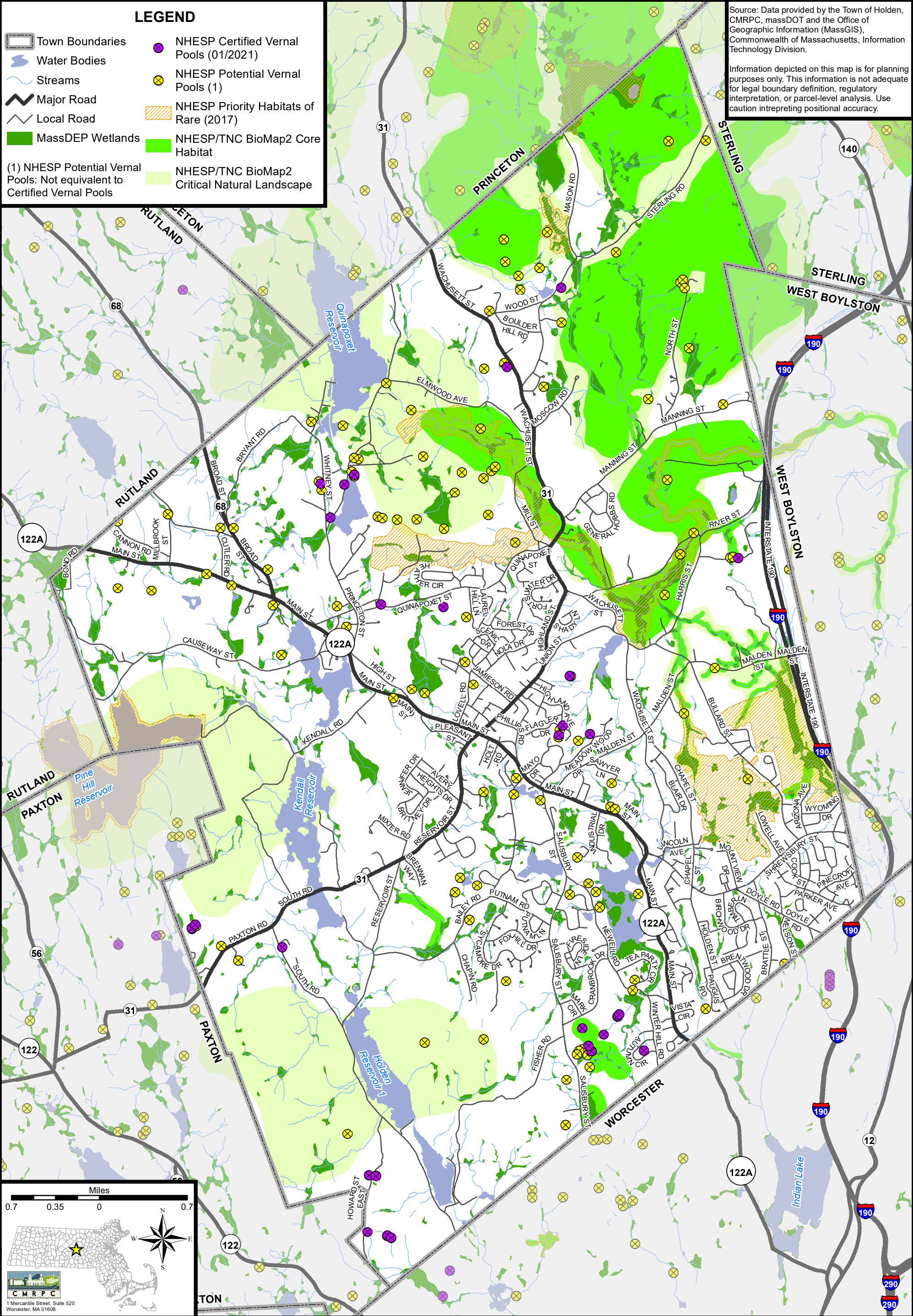
Source: Data provided by the Town of Holden, CMRPC, massDOT and the Office of Geographic Information (MassGIS), Commonwealth of Massachusetts, Information Technology Division.

Information depicted on this map is for planning purposes only. This information is not adequate for legal boundary definition, regulatory interpretation, or parcel-level analysis. Use caution interpreting positional accuracy.



HABITAT FEATURES

OPEN SPACE AND RECREATION PLAN



Town of Holden, Massachusetts

ACTION PLAN

OPEN SPACE AND RECREATION PLAN

(*) Based on FY2020
CAMA data.

LEGEND

- Town Boundaries
- Water Bodies
- Streams
- Major Road
- Local Road
- Trails
- Town Owned Land (*)
- Chapter 61 Land
- Chapter 61A Land
- Chapter 61B Land
- Undeveloped Land (*)

Open Space Categories

Open Space Ownership	Level of Protection
Federal	Perpetuity*
State	Limited
Municipal	None
Private	
Non-Profit	

* Open Space listed as "Perpetuity" will only show a solid Ownership color.

Open Space data from MassGIS, current as of 12/2020

Source: Data provided by the Town of Holden, CMRPC, massDOT and the Office of Geographic Information (MassGIS), Commonwealth of Massachusetts, Information Technology Division.

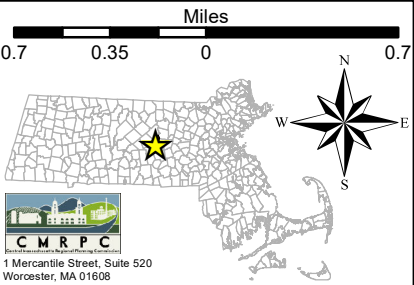
Information depicted on this map is for planning purposes only. This information is not adequate for legal boundary definition, regulatory interpretation, or parcel-level analysis. Use caution interpreting positional accuracy.

2 Goal 2: Provide Active Recreation Resources and Facilities in Holden

3 Goal 3: Promote Passive Recreation and Open Space Resources

4 Goal 4: Develop and Implement Funding Sources and Partnerships

1 Goal 1: Preserve Open Space and Natural Areas in Holden, Including Water, Agricultural, Wildlife, Wetlands, Scenic Vistas, Unique Natural Areas, Historical Sites, and Cultural Resources




Town of Holden, Massachusetts


TRAILS


OPEN SPACE AND RECREATION PLAN


(*) Based on FY2020
CAMA data.


LEGEND


-  Town Boundaries



 Water Bodies


 Streams


 Major Road


 Local Road


 Trails

 Undeveloped Land (*)
-  Federal

 State

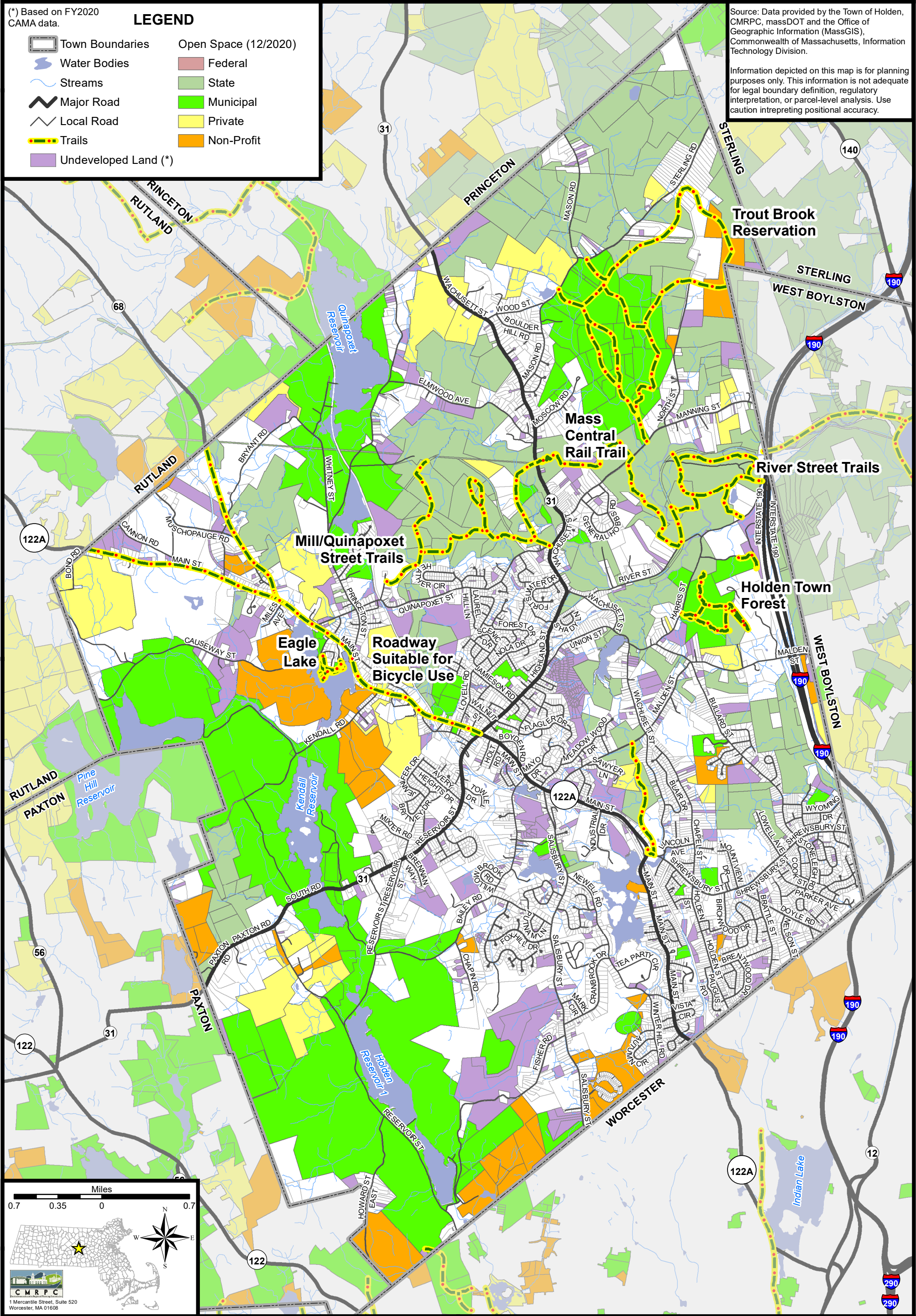
 Municipal

 Private

 Non-Profit

Source: Data provided by the Town of Holden, CMRPC, massDOT and the Office of Geographic Information (MassGIS), Commonwealth of Massachusetts, Information Technology Division.

Information depicted on this map is for planning purposes only. This information is not adequate for legal boundary definition, regulatory interpretation, or parcel-level analysis. Use caution interpreting positional accuracy.



Town of Holden, Massachusetts